

有刷直流电机
DC MOTOR

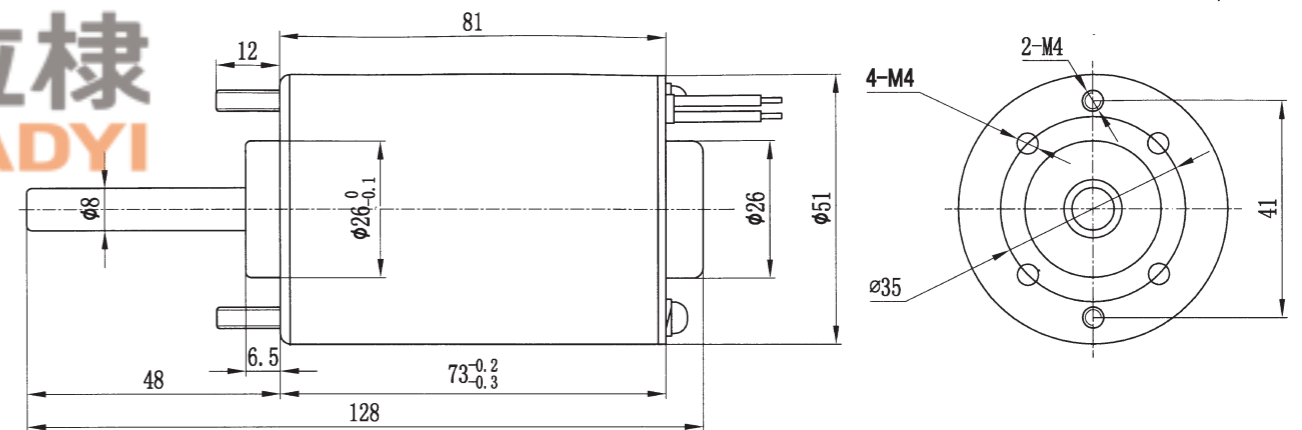
25W
51mm



●外形尺寸 (单位mm) Dimension (unit mm)



法拉棧
FARADYI



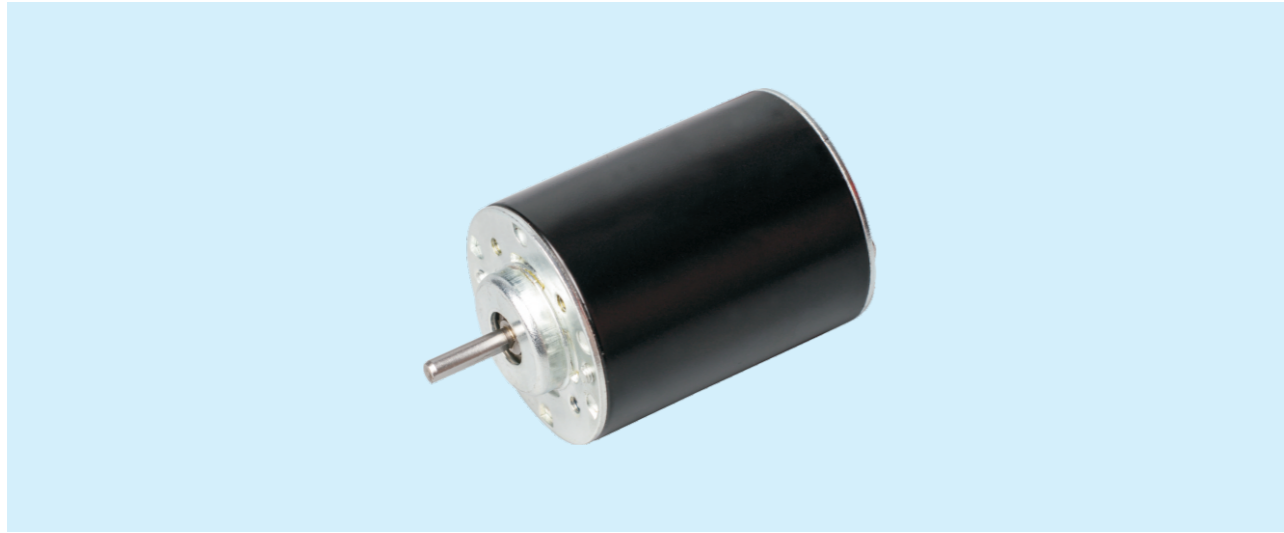
●性能对照表 Performance checklist

电机型号 Motor Type	电压 Voltage	空载转速 No-load Speed	空载电流 No-load Current	空载功率 No-load Power	额定转速 Rated Speed	额定电流 Rated Current	额定功率 Rated Power
HX51S73-4	12V	3800rpm±10%	0.8A	10W	3300rpm	2.5A	25W
HX51S73-4	24V	3800rpm±10%	0.35A	8W	3300rpm	1.5A	25W

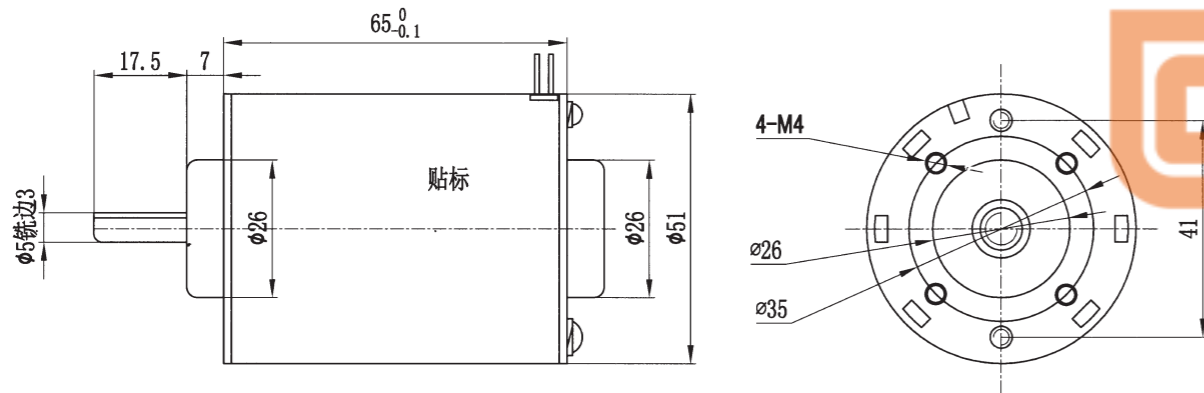
- 表中转速是以电机的平均转速为基数除以减速比而算出的数值。实际转速将随负载大小而变化，变化范围2-20%。
- 表中 色框表示输出轴的旋转方向与电机旋转方向相反。
- 表中转矩是以电机额定转矩 × 减速比 × 传动效率计算而得。
- In the table, the speed is calculated from the base of the motor's average speed divided by the deceleration ratio. The actual speed will vary with the load, ranging from 20% to 20%.
- The box in the table indicates that the rotation direction of the output axis is opposite to that of the motor.
- Table transfer torque is calculated from motor rated torque * deceleration ration * transmission efficiency.

有刷直流电机
DC MOTOR

18W
51mm



●外形尺寸 (单位mm) Dimension (unit mm)



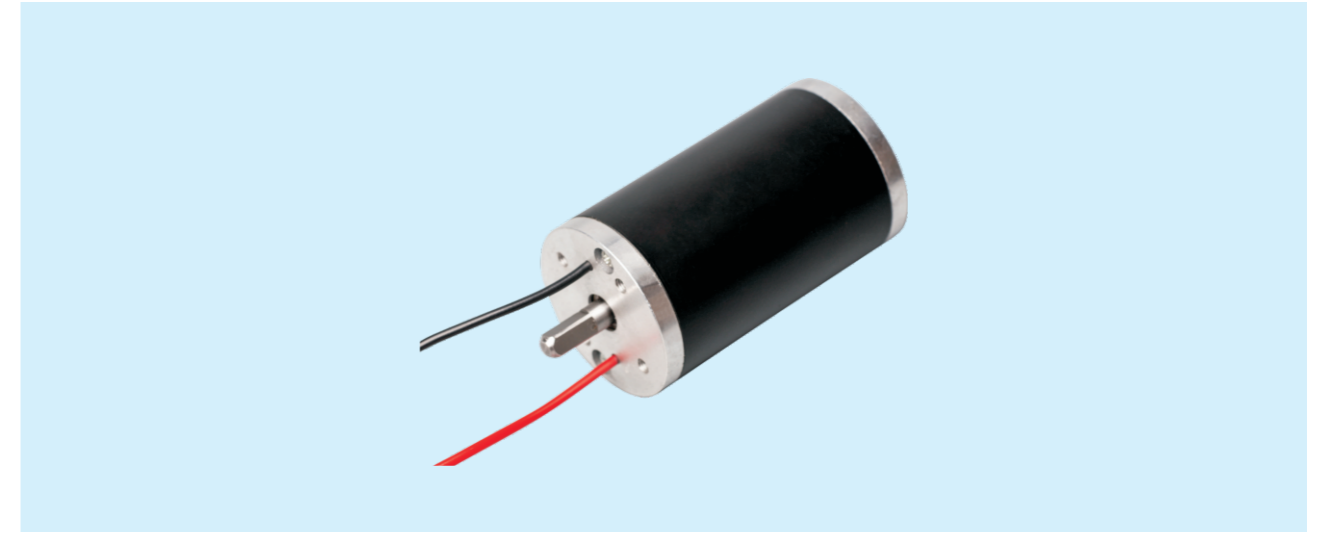
●性能对照表 Performance checklist

电机型号 Motor Type	电压 Voltage	空载转速 No-load Speed	空载电流 No-load Current	空载功率 No-load Power	额定转速 Rated Speed	额定电流 Rated Current	额定功率 Rated Power
HX51S65-95	12V	2800rpm±10%	0.5A	6W	2300rpm	1.5A	18W
HX51S65-95	24V	2800rpm±10%	0.35A	8W	2300rpm	1A	18W

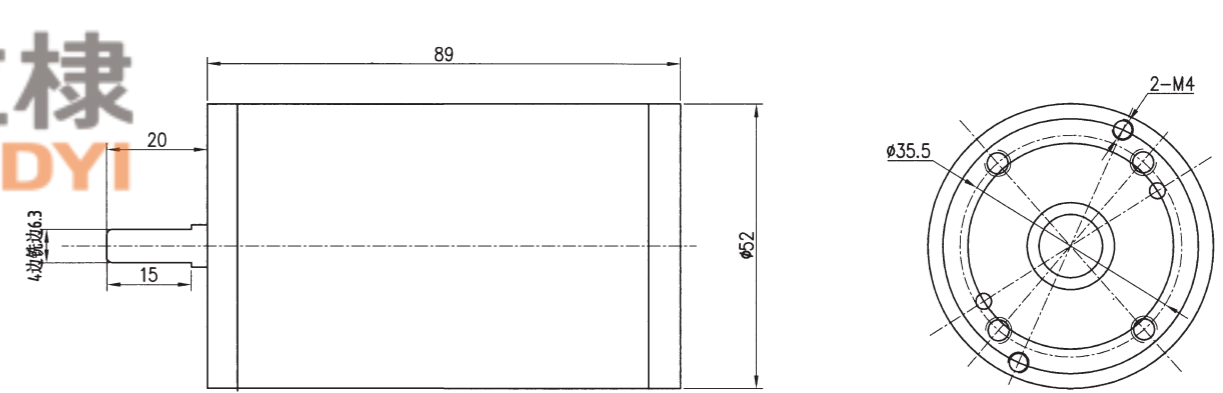
- 表中转速是以电机的平均转速为基数除以减速比而算出的数值。实际转速将随负载大小而变化，变化范围2-20%。
- 表中色框表示输出轴的旋转方向与电机旋转方向相反。
- 表中转矩是以电机额定转矩 × 减速比 × 传动效率计算而得。
- In the table, the speed is calculated from the base of the motor's average speed divided by the deceleration ratio. The actual speed will vary with the load, ranging from 20% to 20%.
- The box in the table indicates that the rotation direction of the output axis is opposite to that of the motor.
- Table transfer torque is calculated from motor rated torque * deceleration ration * transmission efficiency.

有刷直流电机
DC MOTOR

30W
52mm



●外形尺寸 (单位mm) Dimension (unit mm)



●性能对照表 Performance checklist

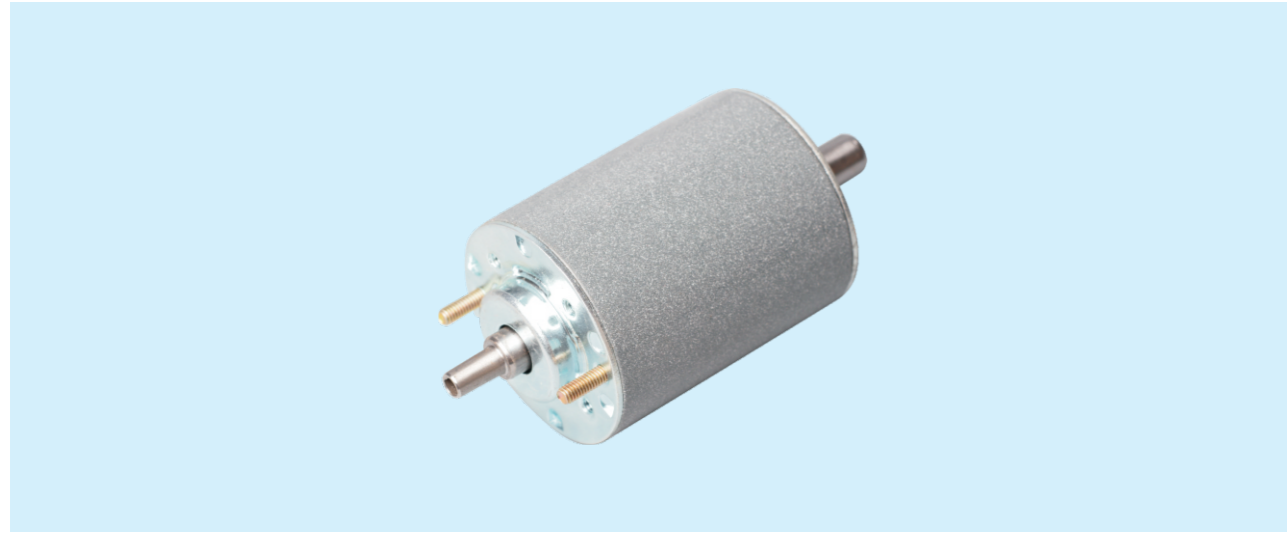
电机型号 Motor Type	电压 Voltage	空载转速 No-load Speed	空载电流 No-load Current	空载功率 No-load Power	额定转速 Rated Speed	额定电流 Rated Current	额定功率 Rated Power
HX52S-4	12V	3800rpm±10%	0.8A	10W	3300rpm	2.5A	30W
HX52S-4	24V	3800rpm±10%	0.5A	10W	3300rpm	1.5A	30W

- 表中转速是以电机的平均转速为基数除以减速比而算出的数值。实际转速将随负载大小而变化，变化范围2-20%。
- 表中色框表示输出轴的旋转方向与电机旋转方向相反。
- 表中转矩是以电机额定转矩 × 减速比 × 传动效率计算而得。
- In the table, the speed is calculated from the base of the motor's average speed divided by the deceleration ratio. The actual speed will vary with the load, ranging from 20% to 20%.
- The box in the table indicates that the rotation direction of the output axis is opposite to that of the motor.
- Table transfer torque is calculated from motor rated torque * deceleration ration * transmission efficiency.

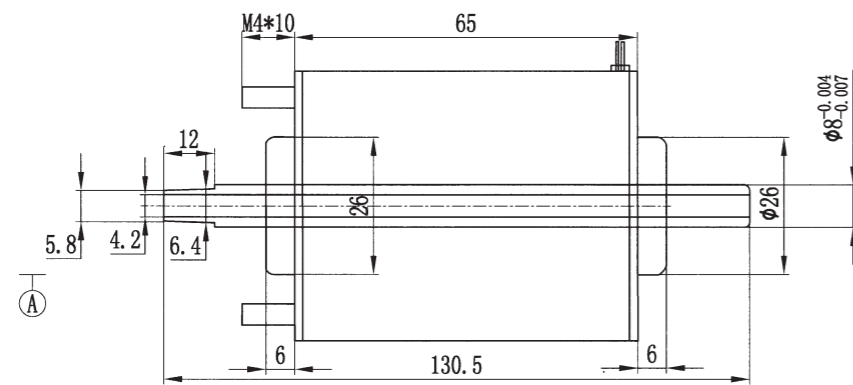


有刷直流电机
DC MOTOR

18W
51mm



●外形尺寸 (单位mm) Dimension (unit mm)



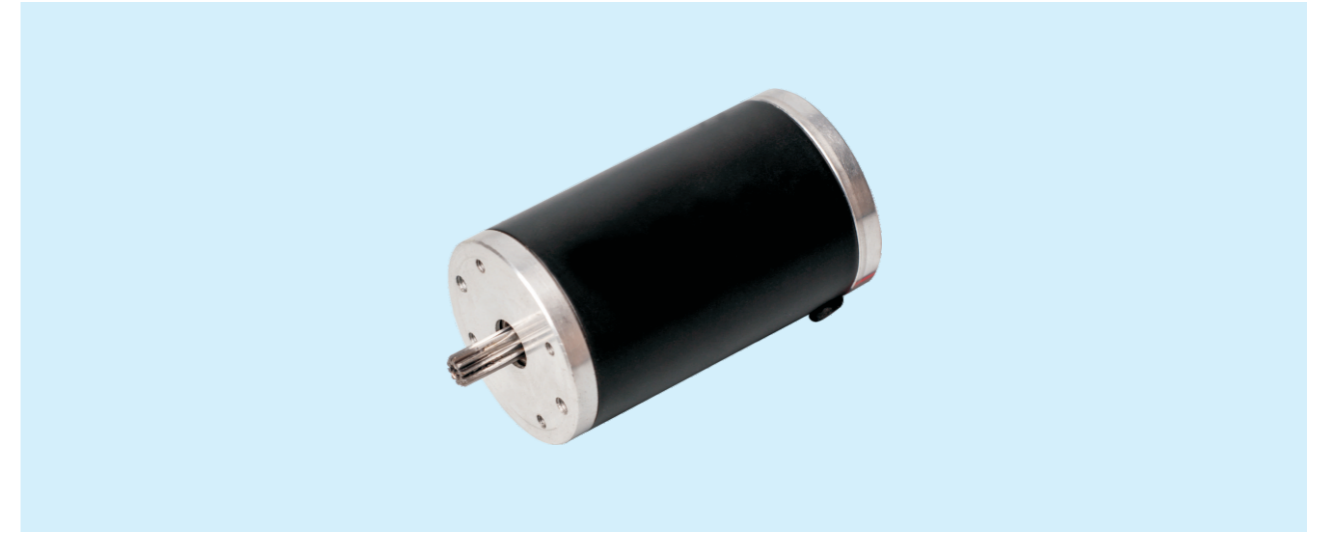
●性能对照表 Performance checklist

电机型号 Motor Type	电压 Voltage	空载转速 No-load Speed	空载电流 No-load Current	空载功率 No-load Power	额定转速 Rated Speed	额定电流 Rated Current	额定功率 Rated Power
HX51S65-130.5	12V	3200rpm±10%	0.8A	10W	2800rpm	2.5A	18W
HX51S65-130.5	24V	3200rpm±10%	0.35A	8W	2800rpm	1.5A	18W

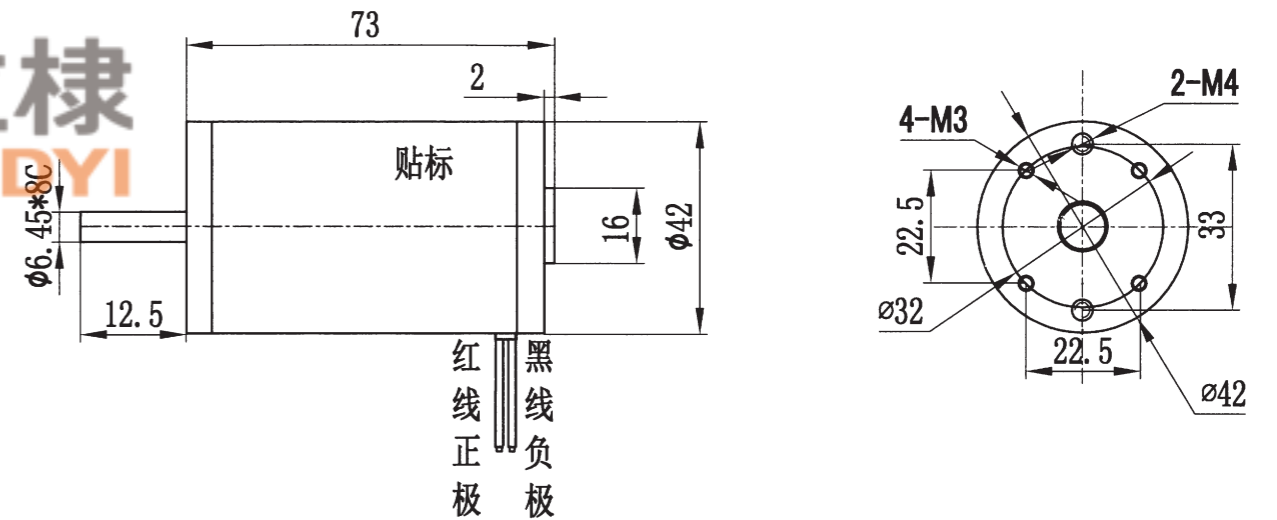
- 表中转速是以电机的平均转速为基数除以减速比而算出的数值。实际转速将随负载大小而变化，变化范围2-20%。
- 表中色框表示输出轴的旋转方向与电机旋转方向相反。
- 表中转矩是以电机额定转矩 × 减速比 × 传动效率计算而得。
- In the table, the speed is calculated from the base of the motor's average speed divided by the deceleration ratio. The actual speed will vary with the load, ranging from 20% to 20%.
- The box in the table indicates that the rotation direction of the output axis is opposite to that of the motor.
- Table transfer torque is calculated from motor rated torque * deceleration ration * transmission efficiency.

有刷直流电机
DC MOTOR

13W
42mm



●外形尺寸 (单位mm) Dimension (unit mm)



●性能对照表 Performance checklist

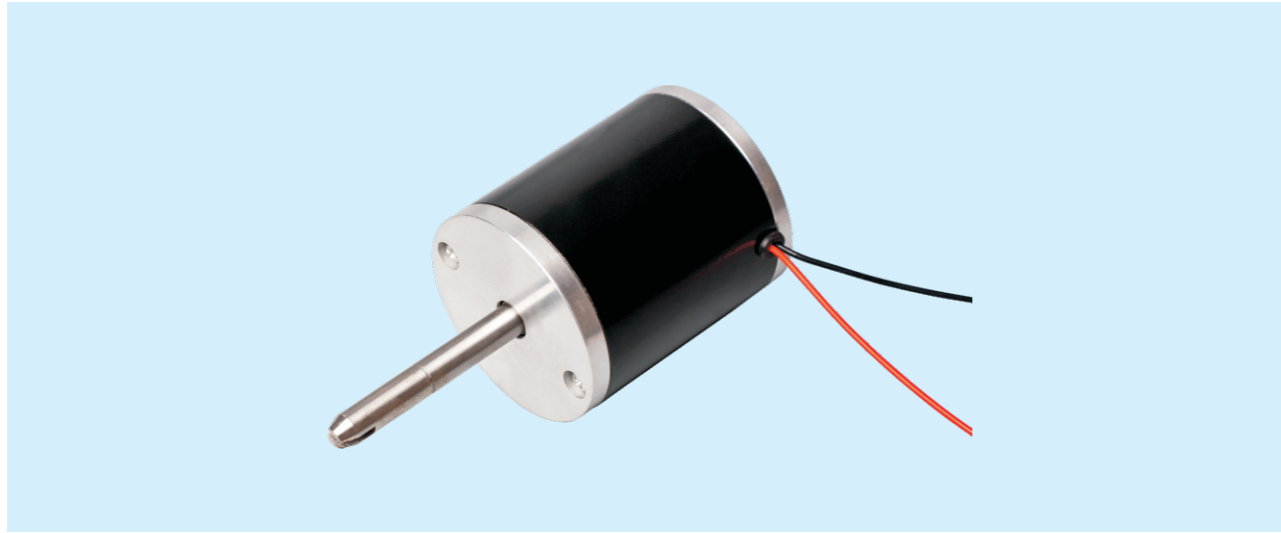
电机型号 Motor Type	电压 Voltage	空载转速 No-load Speed	空载电流 No-load Current	空载功率 No-load Power	额定转速 Rated Speed	额定电流 Rated Current	额定功率 Rated Power
HX42S73-1	24V	3500rpm±10%	0.35A	8W	3000rpm	1.5A	13W

- 表中转速是以电机的平均转速为基数除以减速比而算出的数值。实际转速将随负载大小而变化，变化范围2-20%。
- 表中色框表示输出轴的旋转方向与电机旋转方向相反。
- 表中转矩是以电机额定转矩 × 减速比 × 传动效率计算而得。
- In the table, the speed is calculated from the base of the motor's average speed divided by the deceleration ratio. The actual speed will vary with the load, ranging from 20% to 20%.
- The box in the table indicates that the rotation direction of the output axis is opposite to that of the motor.
- Table transfer torque is calculated from motor rated torque * deceleration ration * transmission efficiency.

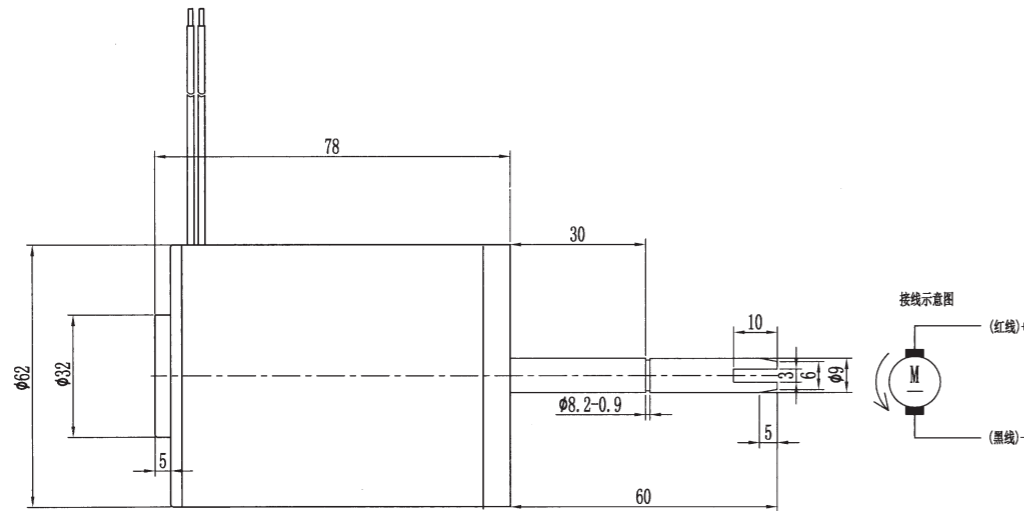


有刷直流电机
DC MOTOR

35W
62mm



●外形尺寸 (单位mm) Dimension (unit mm)



●性能对照表 Performance checklist

电机型号 Motor Type	电压 Voltage	空载转速 No-load Speed	空载电流 No-load Current	空载功率 No-load Power	额定转速 Rated Speed	额定电流 Rated Current	额定功率 Rated Power
HX62S73-4	24V	9000rpm±10%	2.5A	15W	8500rpm	7A	35W

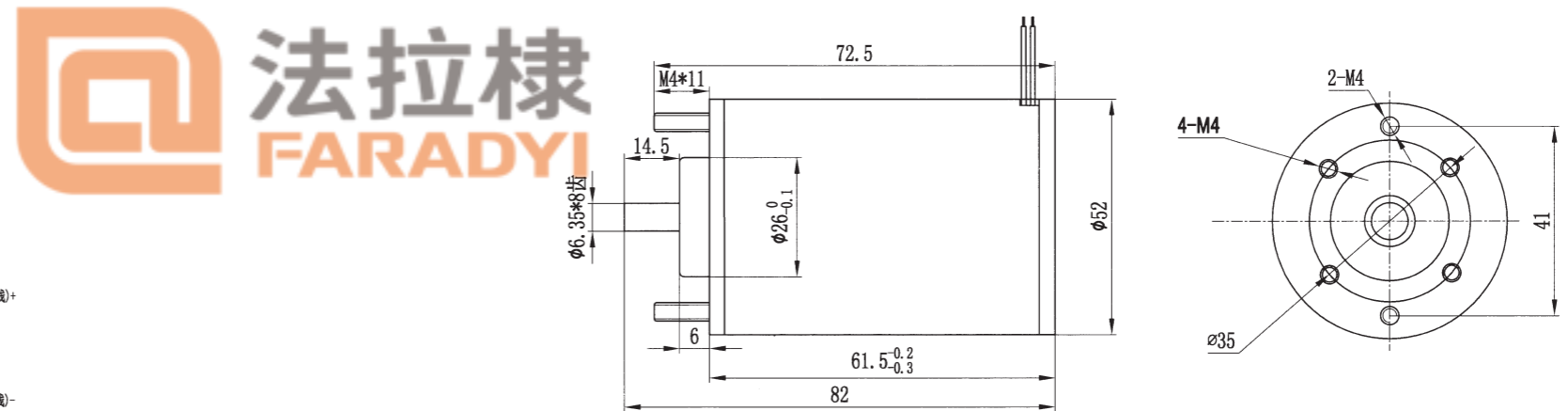
- 表中转速是以电机的平均转速为基数除以减速比而算出的数值。实际转速将随负载大小而变化，变化范围2-20%。
- 表中色框表示输出轴的旋转方向与电机旋转方向相反。
- 表中转矩是以电机额定转矩 × 减速比 × 传动效率计算而得。
- In the table, the speed is calculated from the base of the motor's average speed divided by the deceleration ratio. The actual speed will vary with the load, ranging from 20% to 20%.
- The box in the table indicates that the rotation direction of the output axis is opposite to that of the motor.
- Table transfer torque is calculated from motor rated torque * deceleration ration * transmission efficiency.

有刷直流电机
DC MOTOR

25W
52mm



●外形尺寸 (单位mm) Dimension (unit mm)



●性能对照表 Performance checklist

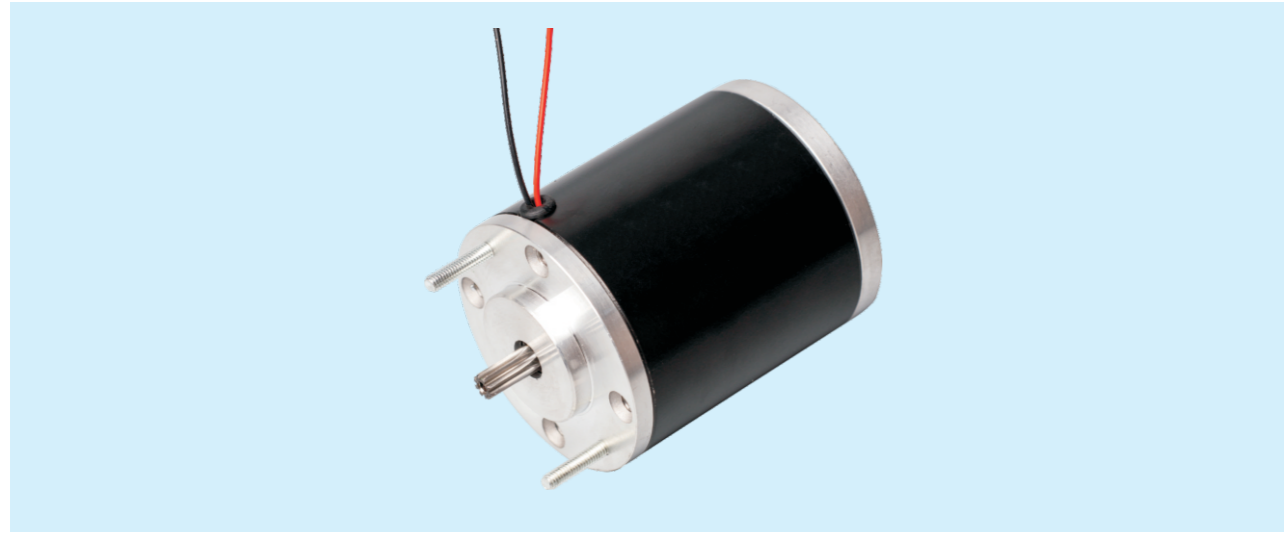
电机型号 Motor Type	电压 Voltage	空载转速 No-load Speed	空载电流 No-load Current	空载功率 No-load Power	额定转速 Rated Speed	额定电流 Rated Current	额定功率 Rated Power
HX52S61.5-1	12V	3600rpm±10%	0.5A	6W	3000rpm	1.5A	12W
HX52S61.5-1	24V	3600rpm±10%	0.35A	6W	3000rpm	1A	12W

- 表中转速是以电机的平均转速为基数除以减速比而算出的数值。实际转速将随负载大小而变化，变化范围2-20%。
- 表中色框表示输出轴的旋转方向与电机旋转方向相反。
- 表中转矩是以电机额定转矩 × 减速比 × 传动效率计算而得。
- In the table, the speed is calculated from the base of the motor's average speed divided by the deceleration ratio. The actual speed will vary with the load, ranging from 20% to 20%.
- The box in the table indicates that the rotation direction of the output axis is opposite to that of the motor.
- Table transfer torque is calculated from motor rated torque * deceleration ration * transmission efficiency.

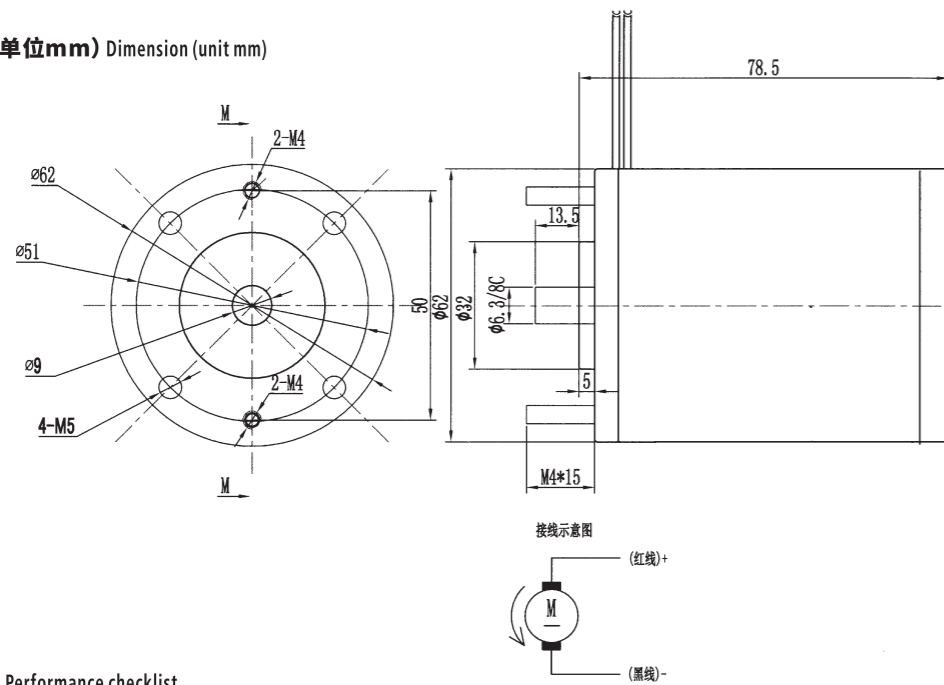


有刷直流电机
DC MOTOR

25W
62mm



●外形尺寸 (单位mm) Dimension (unit mm)



●性能对照表 Performance checklist

电机型号 Motor Type	电压 Voltage	空载转速 No-load Speed	空载电流 No-load Current	空载功率 No-load Power	额定转速 Rated Speed	额定电流 Rated Current	额定功率 Rated Power
HX62S-1	12V	3600rpm±10%	0.5A	6W	3000rpm	2A	25W
HX62S-1	24V	3600rpm±10%	0.35A	6W	3000rpm	1.5A	25W

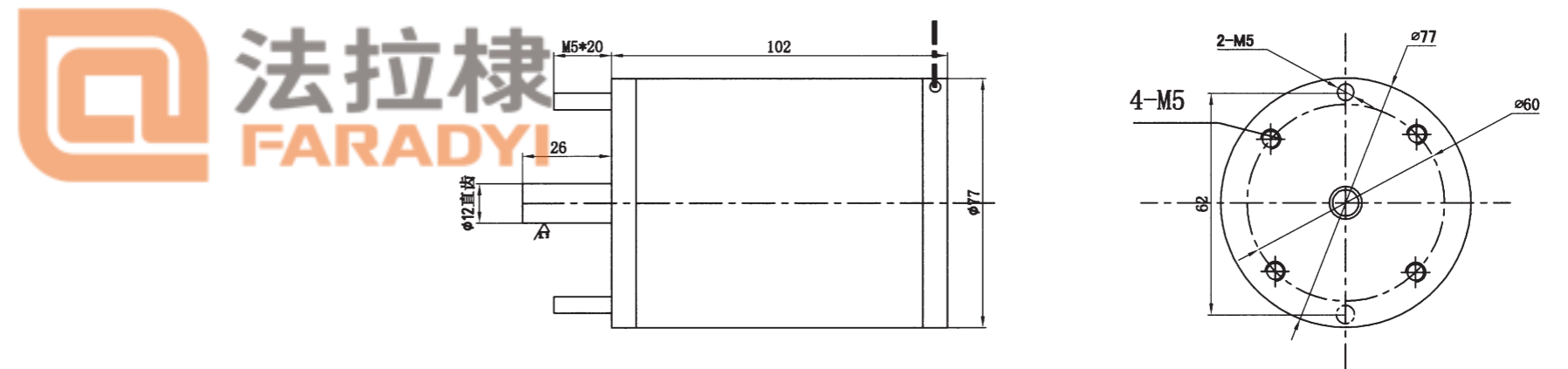
- 表中转速是以电机的平均转速为基数除以减速比而算出的数值。实际转速将随负载大小而变化，变化范围2~20%。
- 表中色框表示输出轴的旋转方向与电机旋转方向相反。
- 表中转矩是以电机额定转矩 × 减速比 × 传动效率计算而得。
- In the table, the speed is calculated from the base of the motor's average speed divided by the deceleration ratio. The actual speed will vary with the load, ranging from 20% to 20%.
- The box in the table indicates that the rotation direction of the output axis is opposite to that of the motor.
- Table transfer torque is calculated from motor rated torque * deceleration ration * transmission efficiency.

有刷直流电机
DC MOTOR

90W
77mm



●外形尺寸 (单位mm) Dimension (unit mm)



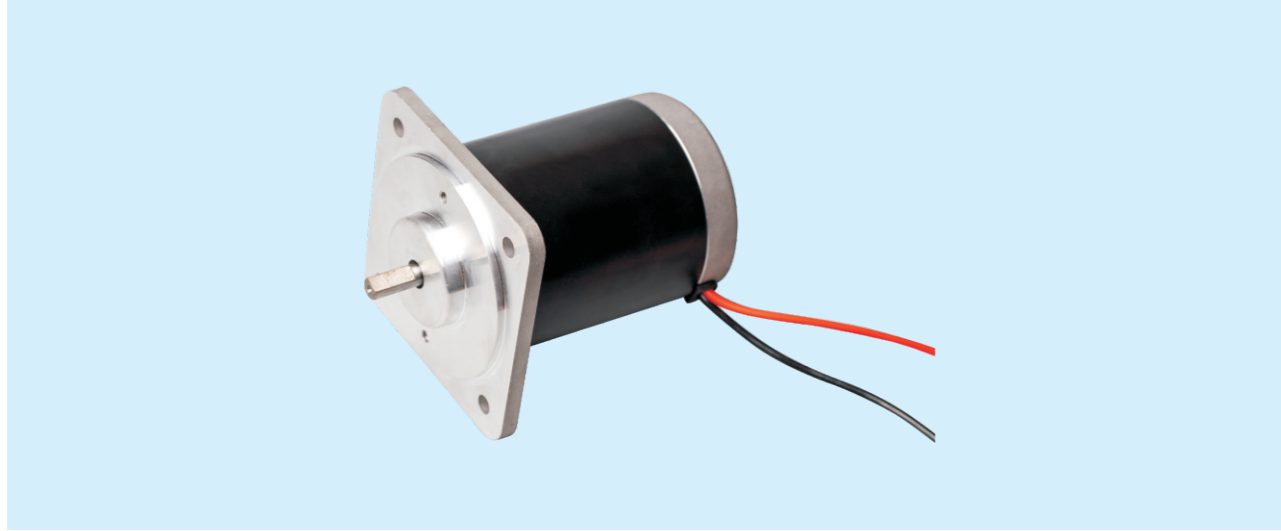
●性能对照表 Performance checklist

电机型号 Motor Type	电压 Voltage	空载转速 No-load Speed	空载电流 No-load Current	空载功率 No-load Power	额定转速 Rated Speed	额定电流 Rated Current	额定功率 Rated Power
HX77S102-1	12V	2800rpm±10%	1.5A	25W	2300rpm	5A	60W
HX77S102-1	24V	2800rpm±10%	0.8A	25W	2300rpm	2.5A	60W

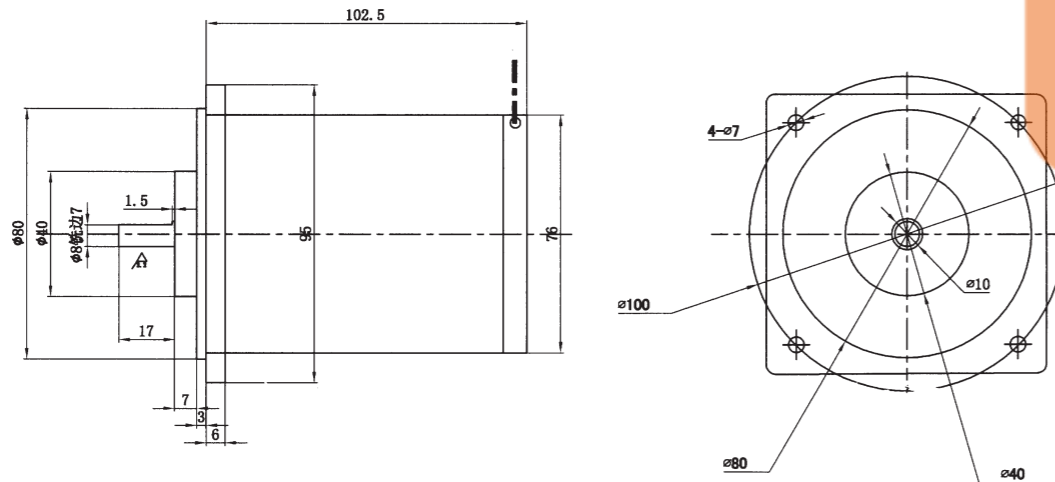
- 表中转速是以电机的平均转速为基数除以减速比而算出的数值。实际转速将随负载大小而变化，变化范围2~20%。
- 表中色框表示输出轴的旋转方向与电机旋转方向相反。
- 表中转矩是以电机额定转矩 × 减速比 × 传动效率计算而得。
- In the table, the speed is calculated from the base of the motor's average speed divided by the deceleration ratio. The actual speed will vary with the load, ranging from 20% to 20%.
- The box in the table indicates that the rotation direction of the output axis is opposite to that of the motor.
- Table transfer torque is calculated from motor rated torque * deceleration ration * transmission efficiency.

有刷直流电机 DC MOTOR

120W
77mm



●外形尺寸 (单位mm) Dimension (unit mm)



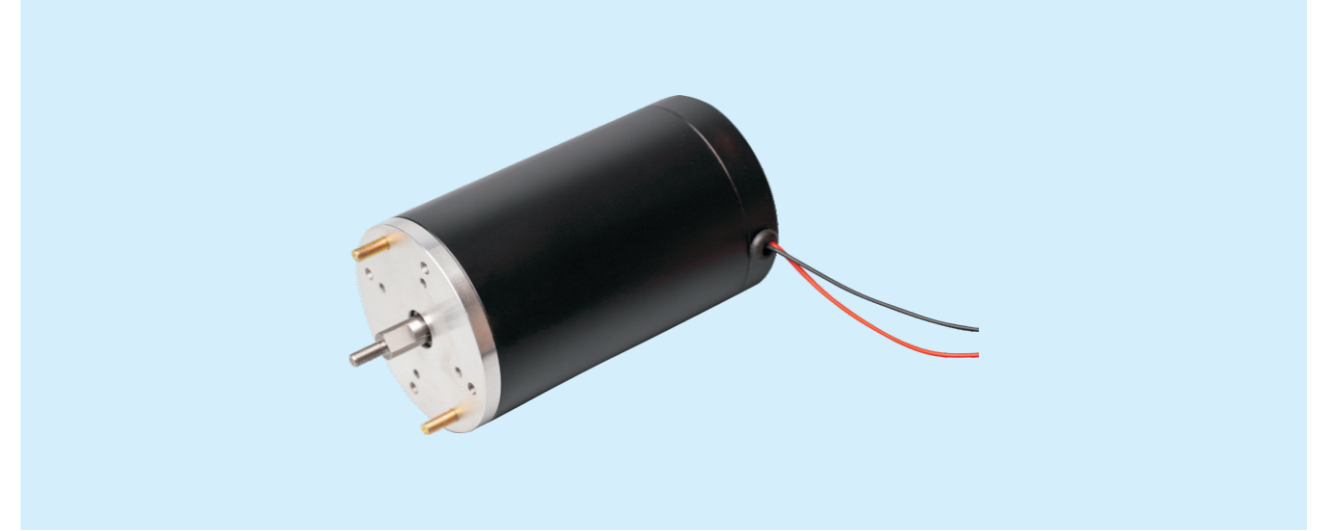
●性能对照表 Performance checklist

电机型号 Motor Type	电压 Voltage	空载转速 No-load Speed	空载电流 No-load Current	空载功率 No-load Power	额定转速 Rated Speed	额定电流 Rated Current	额定功率 Rated Power
HX77S102-7	24V	4000rpm \pm 10%	2.5A	40W	3500rpm	7A	120W
HX77S102-7	12V	4000rpm \pm 10%	3.5A	40W	3500rpm	12A	120W

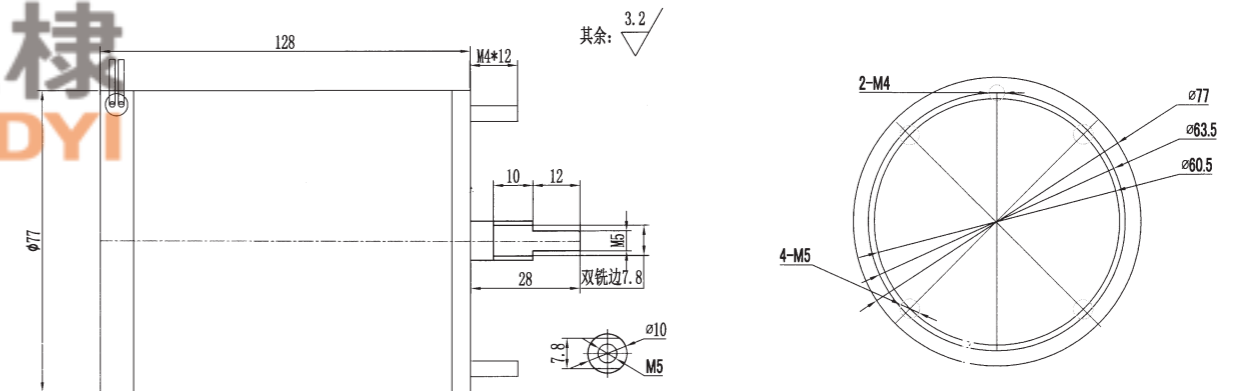
- 表中转速是以电机的平均转速为基数除以减速比而算出的数值。实际转速将随负载大小而变化，变化范围2-20%。
- 表中色框表示输出轴的旋转方向与电机旋转方向相反。
- 表中转矩是以电机额定转矩 \times 减速比 \times 传动效率计算而得。
- In the table, the speed is calculated from the base of the motor's average speed divided by the deceleration ratio. The actual speed will vary with the load, ranging from 20% to 20%.
- The box in the table indicates that the rotation direction of the output axis is opposite to that of the motor.
- Table transfer torque is calculated from motor rated torque * deceleration ratio * transmission efficiency.

有刷直流电机 DC MOTOR

150W
77mm



●外形尺寸 (单位mm) Dimension (unit mm)



●性能对照表 Performance checklist

电机型号 Motor Type	电压 Voltage	空载转速 No-load Speed	空载电流 No-load Current	空载功率 No-load Power	额定转速 Rated Speed	额定电流 Rated Current	额定功率 Rated Power
HX77S128-1	12V	5000rpm \pm 10%	3A	40W	4500rpm	10A	150W
HX77S128-1	24V	5000rpm \pm 10%	2A	40W	4500rpm	6A	150W

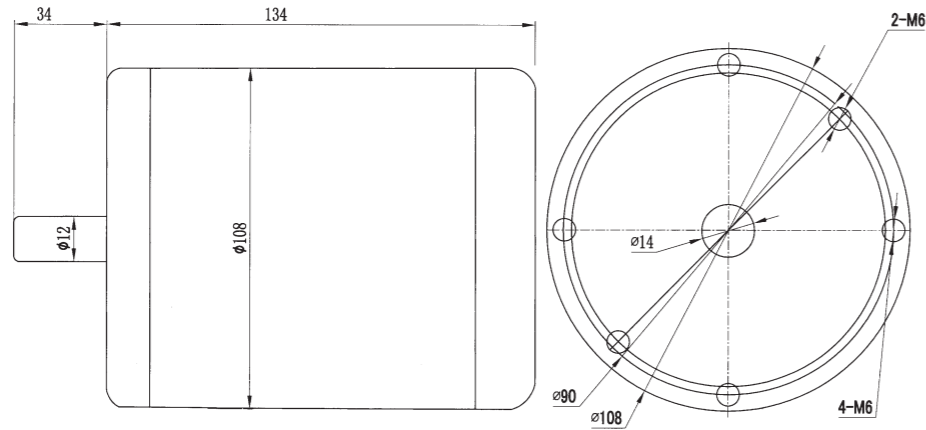
- 表中转速是以电机的平均转速为基数除以减速比而算出的数值。实际转速将随负载大小而变化，变化范围2-20%。
- 表中色框表示输出轴的旋转方向与电机旋转方向相反。
- 表中转矩是以电机额定转矩 \times 减速比 \times 传动效率计算而得。
- In the table, the speed is calculated from the base of the motor's average speed divided by the deceleration ratio. The actual speed will vary with the load, ranging from 20% to 20%.
- The box in the table indicates that the rotation direction of the output axis is opposite to that of the motor.
- Table transfer torque is calculated from motor rated torque * deceleration ratio * transmission efficiency.

有刷直流电机 DC MOTOR

400W 108mm



●外形尺寸 (单位mm) Dimension (unit mm)



●性能对照表 Performance checklist

电机型号 Motor Type	电压 Voltage	空载转速 No-load Speed	空载电流 No-load Current	空载功率 No-load Power	额定转速 Rated Speed	额定电流 Rated Current	额定功率 Rated Power
HX108S-1	12V	2200rpm±10%	16A	160W	1800rpm	32A	400W
HX108S-1	24V	2200rpm±10%	10A	130W	1800rpm	20A	400W

- 表中转速是以电机的平均转速为基数除以减速比而算出的数值。实际转速将随负载大小而变化，变化范围2-20%。
- 表中色框表示输出轴的旋转方向与电机旋转方向相反。
- 表中转矩是以电机额定转矩 × 减速比 × 传动效率计算而得。
- In the table, the speed is calculated from the base of the motor's average speed divided by the deceleration ratio. The actual speed will vary with the load, ranging from 20% to 20%.
- The box in the table indicates that the rotation direction of the output axis is opposite to that of the motor.
- Table transfer torque is calculated from motor rated torque * deceleration ration * transmission efficiency.

型号的阅读方法 PRODUCT NUMBER CODE

●电机 Motor

H **5** **D** **90** - **24** **GU** - **30S** - **M**

① ② ③ ④ ⑤ ⑥ ⑦ ⑧

①	公司名称 Company	平阳恒翔电机有限公司					
②	机座号 Code	2	3	4	5	55	6
③	电机外径 × 安装法兰 Mounting flange(mm)	60x60	60x70	80x80	80x90	90x90	90x104
④	马达系列 Motor Series	D: 有刷直流 DC Motor					
⑤	输出功率 Output (W)	例 (Example) 90:90W					
⑥	电源电压 Voltage	12:12V 90:90V					24:24V 220:220V
⑦	转轴形状 Motor shaft ty	GN:GN 型齿轮轴 GN type pinion shaft GU:GU 型齿轮轴 GU type pinion shaft A: 圆轴型 Round shaft A1: 键槽型 Keyway					
⑧	转速 Speed	30S:3000RPM 18S:1800RPM					
⑨	选配件 Matching	M: 刹车器 Brake B: 编码器 coder					

●减速机 Reducer

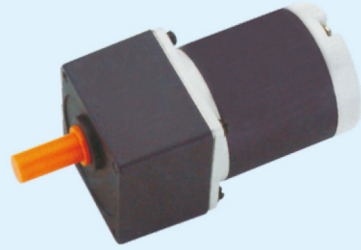
5 **GU** **60** **K** - **T**

① ② ③ ④ ⑤

①	减速器的尺寸 Reducer frame size	2:60mm 3:70mm 4:80mm 5:90mm 6:104mm
②	类型 type of pinion	GN:GN 型齿轮轴 GN type pinion shaft GU:GU 型齿轮轴 GU type pinion shaft
③	减速比 Gear ratio	例 (Example) 60: 1:60
④	轴承种类 Bearing type	K: 滚珠轴承 (对 5GU 方型箱体标注为 KB) Bearing (make KB for type GU square case)
⑤	安装孔类型 Mounting hole type	T: 箱体通孔, 无则表示箱体螺纹孔 If not, it represents the threaded hole of box body

●电机的一般规格 General Specification of Motors

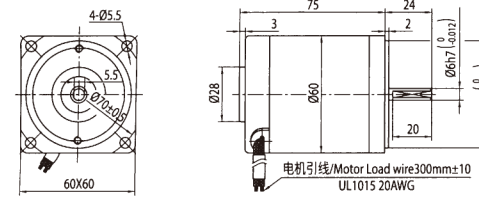
项目 Items	规格 Specifications
绝缘电阻 Insulation Resistance	于常温·常湿下的电机额定运行后,以 DC500V 电阻表测量线圈外壳间时,测量值为 20MΩ 以上 In the circumstance of normal ambient temperature and humidity, the resistance can be up to 20MΩ or more when DC 500v megger is applied between the windings and the frame after rated motor operations.
绝缘耐压 Insulation voltage	于常温·常湿下电机额定运行后,在线圈和外壳间施加一分钟 50Hz 或 60Hz、1.5kv 的电压,亦无异常 In the circumstance of normal ambient temperature and humidity, there will be no problem to withstand 1.5kv at 50Hz/60Hz between the windings and the frame for 1 minute after rated motor operation.
温度上升 Temperature Rise	运行电机后,用温度计法来测量时,电机表面最热点温升数值在 80℃ 以下 The temperature rise should be lower than 80℃ measured by resistance method when the motor is working
绝缘等级 insulation Class	B 级 (130℃) Class B(130℃)
使用温度 Use Temperature	-10℃ ~+40℃ (无结冰) -10℃ ~+40℃ (Non Freezing)
使用湿度 Use Humidity	80% 以下 (无结露的场所) ≤80% (place without dew)



●外形尺寸 (单位mm) Dimension (unit mm)

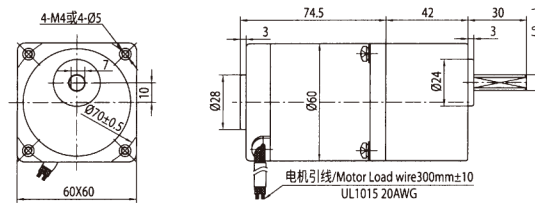
●圆轴电机

重量 Weighr: 0.6kg



●组合: 引线型电机 + 标准减速箱 (减速比 1:3~200)

重量 Weighr: 1.0kg



●电机型号/性能 List of motor characteristics

电机型号 Model	单压 Voltage V	功率 Power W	空载参数 No-load Parameter		负载参数 Load Parameters			电刷寿命 brush life H	电机重量 Motor Weight kg
			转速 Speed r/min	电流 Current A	转速 speed r/min	力矩 torque mN.m	电流 current A		
H2D6-12 □	12	6	3300	0.6	3000	19	1.2	2000	0.6
H2D6-24 □	24	6	3300	0.4	3000	19	0.7	2000	0.6
H2D6-12 □	12	6	2100	0.5	1800	32	1.2	2000	0.6
H2D6-24 □	24	6	2100	0.3	1800	32	0.7	2000	0.6

- 电机电压、功率及转速可在配件尺寸等条件下根据客户要求定制。
- 外置电刷电机，用户可自行在外部更换电刷；内置电刷电机更换电刷时需将电机拆装后方可更换；F2D 此型号是内置电刷电机。
- Motor voltage, power and speed will be customized according to his request under allowed circumstance of adoptable dimension.
- For external brush motor, you can replace the brush directly. For internal ones, we need to disassembly the motor fist. F2D this model is internal brush motor.

●减速箱减速比 / 性能对照表 Gear reduction ratio/performance comparison

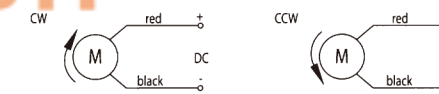
型号 Model	减速比 Gear Ratio	3	3.6	5	6	7.5	9	10	12.5	15	18	20	25	30	36	40	50	60	75	90	100	120	150	180	200
H2D6-24 □ -30S	转速 Speed r/min	999	833	600	500	400	333	300	240	200	166	150	120	100	83	75	60	50	40	33	30	25	20	16.5	15
	转矩 Torgne N.m	0.05	0.06	0.08	0.09	0.12	0.14	0.16	0.19	0.23	0.28	0.31	0.35	0.42	0.50	0.56	0.70	0.75	0.94	1.13	1.25	1.5	1.88	2.25	2.5
H2D6-24 □ -18S	转速 Speed r/min	600	500	360	300	240	200	180	144	120	100	90	72	60	50	45	36	30	24	20	18	15	12	10	9
	转矩 Torgne N.m	0.08	0.09	0.13	0.16	0.19	0.23	0.26	0.32	0.39	0.47	0.52	0.58	0.70	0.84	0.93	1.17	1.26	1.57	1.89	2.10	2.50	2.50	2.50	2.50

- 表中转速是以电机的平均转速为基数除以减速比而算出的数值。实际转速将随负载大小而变化，变化范围 2-20%。
- 表中 色框表示输出轴的旋转方向与电机旋转方向相反。
- 表中转矩是以电机额定转矩 × 减速比 × 传动效率计算而得。
- In the table, the speed is calculated from the base of the motor's average speed divided by the deceleration ratio. The actual speed will vary with the load, ranging from 2% to 20%.
- The box in the table indicates that the rotation direction of the output axis is opposite to that of the motor.
- Table transfer torque is calculated from motor rated torque * deceleration ratio * transmission efficiency.



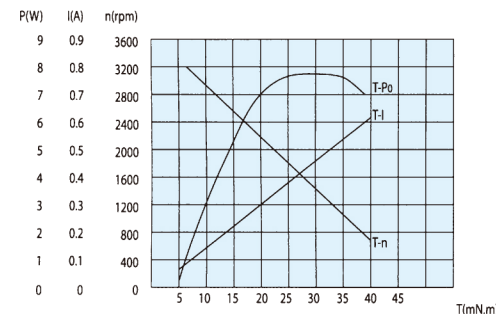
●其中速比 3~18 可以做成短型减速箱，高度为 32mm。Gear ratio 3~18, short case is possible, height of 32mm.

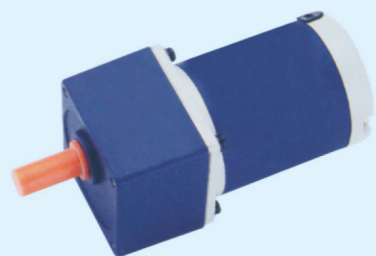
●接线图 Wiring Diagram



- 运转方向指从电机轴看来的方向。CW 表示顺时针方向，CCW 表示逆时针方向。
- The direction of motor rotation is as viewed from the shaft end of motoc CW represents the clockwise direction, while CCW represents the counterclockwise direction

●电机特性曲线 Characteristic Curve of Motor

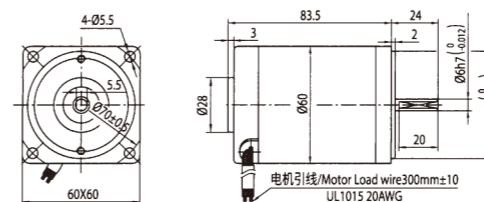




●外形尺寸 (单位mm) Dimension (unit mm)

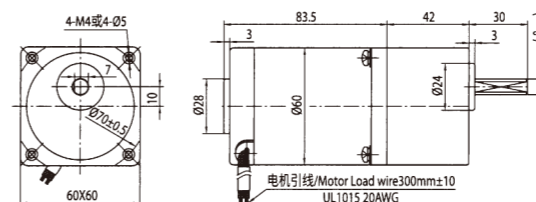
●圆轴电机

重量 Weighr: 0.7kg



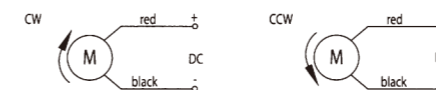
●组合: 引线型电机 + 标准减速箱 (减速比 1:3~200)

重量 Weighr: 1.1kg



●其中速比 3~18 可以做成短型减速箱, 高度为 32mm。Gear ratio 3~18, short case is possible, height of 32mm.

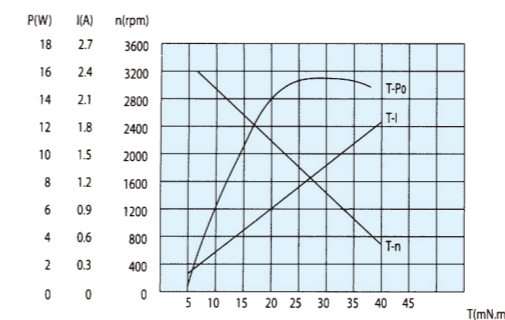
●接线图 Wiring Diagram



●运转方向指从电机轴看来的方向。CW 表示顺时针方向, CCW 表示逆时针方向。

● The direction of motor rotation is as viewed from the shaft end of motoc CW represents the clockwise direction, while CCW represents the counterclockwise direction

●电机特性曲线 Characteristic Curve of Motor



●电机型号/性能 List of motor characteristics

电机型号 Model	单压 Voltage V	功率 Power W	空载参数 No-load Parameter		负载参数 Load Parameters			电刷寿命 brush life H	电机重量 Motor Weight kg
			转速 Speed r/min	电流 Current A	转速 speed r/min	力矩 torque mN.m	电流 current A		
H2D10-12 □	12	10	3300	0.7	3000	32	1.8	2000	0.7
H2D10-24 □	24	10	3300	0.5	3000	32	0.9	2000	0.7
H2D10-12 □	12	10	2100	0.6	1800	53	1.8	2000	0.7
H2D10-24 □	24	10	2100	0.4	1800	53	0.9	2000	0.7

●电机电压、功率及转速可在配件尺寸等条件下根据客户要求定制。

●外置电刷电机, 用户可自行在外部更换电刷; 内置电刷电机更换电刷时需将电机拆装后方可更换; F2D 此型号是内置电刷电机。

● Motor voltage, power and speed will be customized according to his requestment under allowed circumstance of adoptable dimension.

● For external brush motor, you can replace the brush directly. For internal ones, we need to disassembly the motor fist. F2D this model is internal brush motor.

●减速箱减速比 / 性能对照表 Gear reduction ratio/performance comparison

型号 Model	减速比 Gear Ratio	3	3.6	5	6	7.5	9	10	12.5	15	18	20	25	30	36	40	50	60	75	90	100	120	150	180	200
H2D10-24 □ -30S	转速 Speed r/min	999	833	600	500	400	333	300	240	200	166	150	120	100	83	75	60	50	40	33	30	25	20	16.5	15
	转矩 Torgne N.m	0.08	0.09	0.13	0.16	0.19	0.23	0.26	0.32	0.39	0.46	0.52	0.58	0.70	0.84	0.93	1.16	1.25	1.57	1.88	2.09	2.5	3	3	3
H2D10-24 □ -18S	转速 Speed r/min	600	500	360	300	240	200	180	144	120	100	90	72	60	50	45	36	30	24	20	18	15	12	10	9
	转矩 Torgne N.m	0.13	0.15	0.21	0.26	0.32	0.39	0.43	0.54	0.64	0.77	0.86	0.97	1.16	1.39	1.55	1.93	2.09	2.50	2.50	2.50	2.50	2.50	2.50	2.50

●表中转速是以电机的平均转速为基数除以减速比而算出的数值。实际转速将随负载大小而变化, 变化范围 2-20%。

●表中色框表示输出轴的旋转方向与电机旋转方向相反。

●表中转矩是以电机额定转矩 × 减速比 × 传动效率计算而得。

● In the table, the speed is calculated from the base of the motor's average speed divided by the deceleration ratio. The actual speed will vary with the load, ranging from 2% to 20%.

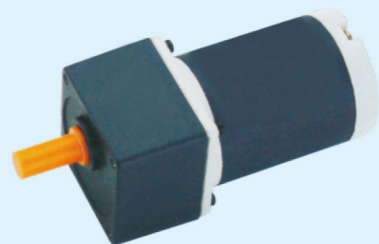
● The box in the table indicates that the rotation direction of the output axis is opposite to that of the motor.

● Table transfer torque is calculated from motor rated torque * deceleration ratio * transmission efficiency.

法拉梯 FARADYI

有刷直流减速电机 DC GEAR MOTOR

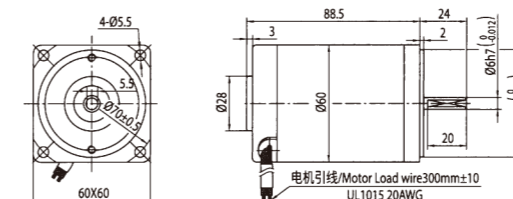
15W 60mm



●外形尺寸 (单位mm) Dimension (unit mm)

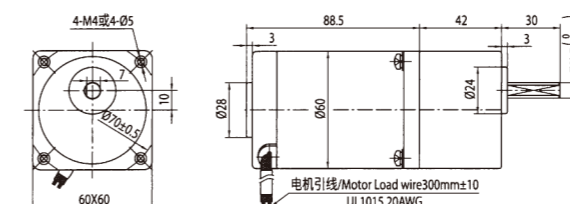
●圆轴电机

重量 Weighr: 0.8kg



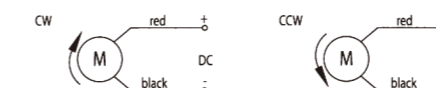
●组合: 引线型电机 + 标准减速箱 (减速比 1:3~200)

重量 Weighr: 1.2kg



其中速比 3~18 可以做成短型减速箱, 高度为 32mm。Gear ratio 3~18, short case is possible, height of 32mm.

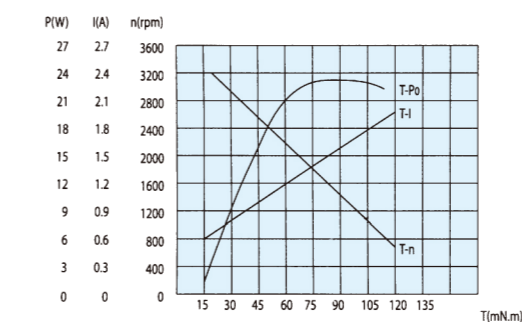
●接线图 Wiring Diagram



●运转方向指从电机轴看来的方向。CW 表示顺时针方向, CCW 表示逆时针方向。

● The direction of motor rotation is as viewed from the shaft end of motoc CW represents the clockwise direction, while CCW represents the counterclockwise direction

●电机特性曲线 Characteristic Curve of Motor



●电机型号/性能 List of motor characteristics

电机型号 Model	单压 Voltage V	功率 Power W	空载参数 No-load Parameter		负载参数 Load Parameters			电刷寿命 brush life H	电机重量 Motor Weight kg
			转速 Speed r/min	电流 Current A	转速 speed r/min	力矩 torque mN.m	电流 current A		
H2D15-12 □	12	15	3400	0.8	3000	47	2.1	2000	0.8
H2D15-24 □	24	15	3350	0.4	3000	47	1.1	2000	0.8
H2D15-12 □	12	15	2200	0.5	1800	80	2	2000	0.7
H2D15-24 □	24	15	2150	0.3	1800	80	1.1	2000	0.7

●电机电压、功率及转速可在配件尺寸等条件下根据客户要求定制。

●外置电刷电机, 用户可自行在外部更换电刷; 内置电刷电机更换电刷时需将电机拆装后方可更换; F2D 此型号是内置电刷电机。

● Motor voltage, power and speed will be customized according to his requestment under allowed circumstance of adoptable dimension.

● For external brush motor, you can replace the brush directly. For internal ones, we need to disassembly the motor fist. F2D this model is internal brush motor.

●减速箱减速比 / 性能对照表 Gear reduction ratio/performance comparison

型号 Model	减速比 Gear Ratio	3	3.6	5	6	7.5	9	10	12.5	15	18	20	25	30	36	40	50	60	75	90	100	120	150	180	200
H2D15-24 □ -30S	转速 Speed r/min	999	833	600	500	400	333	300	240	200	166	150	120	100	83	75	60	50	40	33	30	25	20	16.5	15
	转矩 Torgne N.m	0.11	0.14	0.19	0.23	0.29	0.34	0.38	0.48	0.57	0.69	0.76	0.86	1.03	1.23	1.37	1.71	1.85	2.31	2.78	3	3	3	3	3
H2D15-24 □ -18S	转速 Speed r/min	999	833	600	500	400	333	300	240	200	166	150	120	100	83	75	60	50	40	33	30	25	20	16.5	15
	转矩 Torgne N.m	0.11	0.14	0.19	0.23	0.29	0.34	0.38	0.48	0.57	0.69	0.76	0.86	1.03	1.23	1.37	1.71	1.85	2.31	2.78	3	3	3	3	3

●表中转速是以电机的平均转速为基数除以减速比而算出的数值。实际转速将随负载大小而变化, 变化范围 2-20%。

●表中 □ 色框表示输出轴的旋转方向与电机旋转方向相反。

●表中转矩是以电机额定转矩 × 减速比 × 传动效率计算而得。

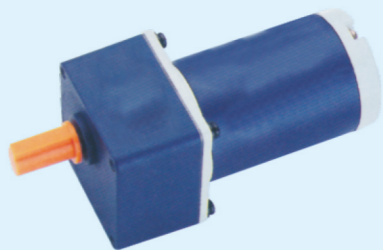
● In the table, the speed is calculated from the base of the motor's average speed divided by the deceleration ratio. The actual speed will vary with the load, ranging from 2% to 20%.

● The □ box in the table indicates that the rotation direction of the output axis is opposite to that of the motor.

● Table transfer torque is calculated from motor rated torque * deceleration ratio * transmission efficiency.

有刷直流减速电机 DC GEAR MOTOR

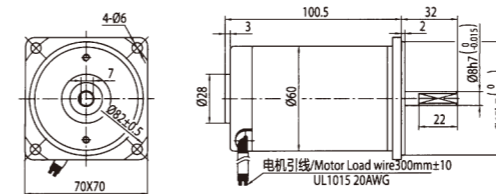
25W 70mm



●外形尺寸 (单位mm) Dimension (unit mm)

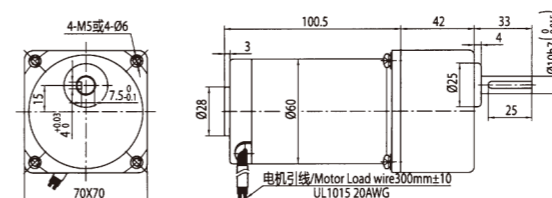
●圆轴电机

重量 Weighr: 1.0kg

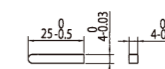


●组合: 引线型电机 + 标准减速箱 (减速比 1:3~200)

重量 Weighr: 1.6kg



●键 (减速器附件)



●电机型号/性能 List of motor characteristics

电机型号 Model	单压 Voltage V	功率 Power W	空载参数 No-load Parameter		负载参数 Load Parameters			电刷寿命 brush life H	电机重量 Motor Weight kg
			转速 Speed r/min	电流 Current A	转速 speed r/min	力矩 torque mN.m	电流 current A		
H3D25-12 □	12	25	3400	0.8	3000	80	3	2000	1.0
H3D25-24 □	24	25	3350	0.4	3000	80	1.5	2000	1.0
H3D25-12 □	12	25	2200	0.6	1800	132	3	2000	0.7
H3D25-24 □	24	25	2250	0.3	1800	132	1.5	2000	0.7

- 电机电压、功率及转速可在配件尺寸等条件下根据客户要求定制。
- 外置电刷电机，用户可自行在外部更换电刷；内置电刷电机更换电刷时需将电机拆装后方可更换；F3D 此型号是内置电刷电机。
- Motor voltage, power and speed will be customized according to his requestment under allowed circumstance of adoptable dimension.
- For external brush motor, you can replace the brush directly. For internal ones, we need to disassembly the motor fist. F3D this model is internal brush motor.

●减速箱减速比 / 性能对照表 Gear reduction ratio/performance comparison

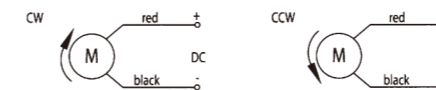
型号 Model	减速比 Gear Ratio	3	3.6	5	6	7.5	9	10	12.5	15	18	20	25	30	36	40	50	60	75	90	100	120	150	180	200
H3D25-24 □ -30S	转速 Speed r/min	999	833	600	500	400	333	300	240	200	166	150	120	100	83	75	60	50	40	33	30	25	20	16.5	15
	转矩 Torgne N.m	0.19	0.23	0.32	0.38	0.48	0.58	0.64	0.80	0.97	1.04	1.16	1.45	1.74	2.09	2.32	2.90	3.13	3.92	4.70	5	5	5	5	5
H3D25-24 □ -18S	转速 Speed r/min	600	500	360	300	240	200	180	144	120	100	90	72	60	50	45	36	30	24	20	18	15	12	10	9
	转矩 Torgne N.m	0.32	0.38	0.53	0.64	0.80	0.96	1.07	1.34	1.60	1.92	2.14	2.41	2.89	3.46	3.85	4.81	5	5	5	5	5	5	5	5

- 表中转速是以电机的平均转速为基数除以减速比而算出的数值。实际转速将随负载大小而变化，变化范围 2~20%。
- 表中 □ 色框表示输出轴的旋转方向与电机旋转方向相反。
- 表中转矩是以电机额定转矩 × 减速比 × 传动效率计算而得。
- In the table, the speed is calculated from the base of the motor's average speed divided by the deceleration ratio. The actual speed will vary with the load, ranging from 2% to 20%.
- The □ box in the table indicates that the rotation direction of the output axis is opposite to that of the motor.
- Table transfer torque is calculated from motor rated torque * deceleration ratio * transmission efficiency.

法拉第 FARADYI

●其中速比 3~18 可以做成型减速箱，高度为 32mm。Gear ratio 3~18, short case is possible, height of 32mm.

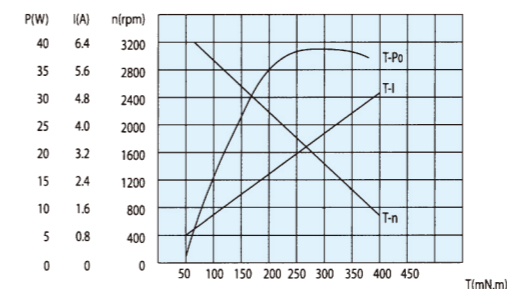
●接线图 Wiring Diagram



●运转方向指从电机轴看来的方向。CW 表示顺时针方向，CCW 表示逆时针方向。

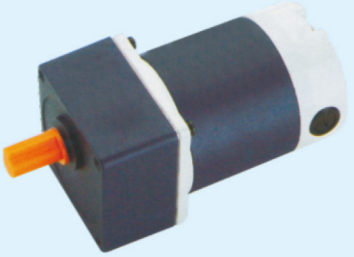
● The direction of motor rotation is as viewed from the shaft end of motoc CW represents the clockwise direction, while CCW represents the counterclockwise direction

●电机特性曲线 Characteristic Curve of Motor



有刷直流减速电机 DC GEAR MOTOR

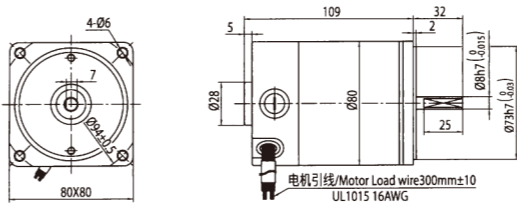
25W 80mm



●外形尺寸 (单位mm) Dimension (unit mm)

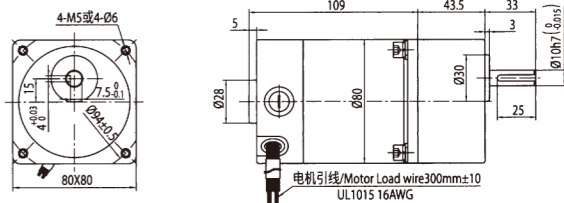
●圆轴电机

重量 Weighr: 1.7kg



●组合: 引线型电机 + 标准减速箱 (减速比 1:3~200)

重量 Weighr: 2.5kg

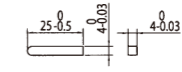
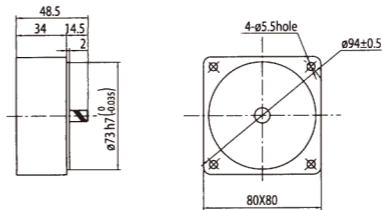


●中间齿轮箱 Decimal Gearhead

可安装在齿轮轴型上 Can be connected to GN pinion shaft type

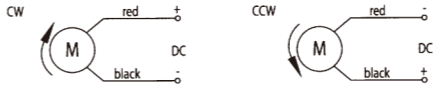
电动机外形与齿轮轴型相同 4GN10XK

重量 Weight: 0.41kg



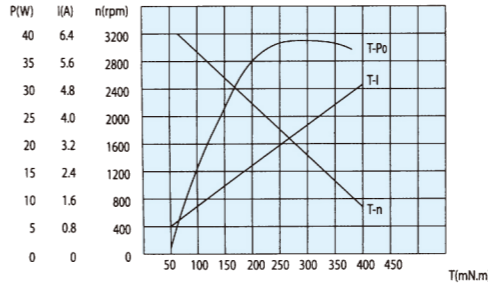
其中速比 3~18 可以做成短型减速箱, 高度为 32mm。Gear ratio 3~18, short case is possible, height of 32mm.

●接线图 Wiring Diagram



●运转方向指从电机轴看来的方向。CW 表示顺时针方向, CCW 表示逆时针方向。
● The direction of motor rotation is as viewed from the shaft end of motor CW represents the clockwise direction, while CCW represents the counterclockwise direction

●电机特性曲线 Characteristic Curve of Motor



●电机型号/性能 List of motor characteristics

电机型号 Model	单压 Voltage V	功率 Power W	空载参数 No-load Parameter		负载参数 Load Parameters			电刷寿命 brush life H	电机重量 Motor Weight kg
			转速 Speed r/min	电流 Current A	转速 speed r/min	力矩 torque mN.m	电流 current A		
H4D25-12 □	12	25	3250	1.6	3000	80	3	2000	1.7
H4D25-24 □	24	25	3250	0.8	3000	80	1.5	2000	1.7
H4D25-90 □	90	25	3200	0.2	3000	80	0.5	2000	1.7
H4D25-12 □	12	25	2050	0.8	1800	132	3	2000	1.7
H4D25-24 □	24	25	2000	0.4	1800	132	1.5	2000	1.7
H4D25-90 □	90	25	2000	0.2	1800	132	0.5	2000	1.7

- 电机电压、功率及转速可在配件尺寸等条件下根据客户要求定制。
- 外置电刷电机, 用户可自行在外部更换电刷; 内置电刷电机更换电刷时需将电机拆装后方可更换; F4D 此型号是外置电刷电机。
- Motor voltage, power and speed will be customized according to his requestment under allowed circumstance of adoptable dimension.
- For external brush motor, you can replace the brush directly. For internal ones, we need to disassembly the motor fist. F4D this model is external brush motor.

●减速箱减速比 / 性能对照表 Gear reduction ratio/performance comparison

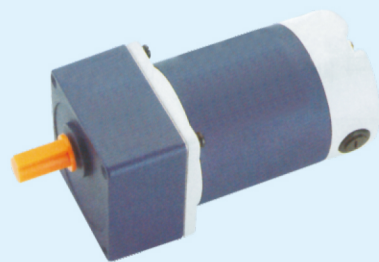
型号 Model	减速比 Gear Ratio	3	3.6	5	6	7.5	9	10	12.5	15	18	20	25	30	36	40	50	60	75	90	100	120	150	180	200
H4D25-24 □ -30S	转速 Speed r/min	999	833	600	500	400	333	300	240	200	166	150	120	100	83	75	60	50	40	33	30	25	20	16.5	15
	转矩 Torgne N.m	0.19	0.23	0.32	0.38	0.48	0.58	0.64	0.80	0.96	1.15	1.28	1.44	1.73	2.07	2.30	2.88	3.11	3.89	4.67	5.18	6.22	7.78	8	8
H4D25-24 □ -18S	转速 Speed r/min	600	500	360	300	240	200	180	144	120	100	90	72	60	50	45	36	30	24	20	18	15	12	10	9
	转矩 Torgne N.m	0.32	0.38	0.53	0.64	0.80	0.96	1.07	1.34	1.60	1.92	2.14	2.41	2.89	3.46	3.85	4.81	5.20	6.50	7.79	8	8	8	8	8

- 表中转速是以电机的平均转速为基数除以减速比而算出的数值。实际转速将随负载大小而变化, 变化范围 2-20%。
- 表中 □ 色框表示输出轴的旋转方向与电机旋转方向相反。
- 表中转矩是以电机额定转矩 × 减速比 × 传动效率计算而得。
- In the table, the speed is calculated from the base of the motor's average speed divided by the deceleration ratio. The actual speed will vary with the load, ranging from 2% to 20%.
- The □ box in the table indicates that the rotation direction of the output axis is opposite to that of the motor.
- Table transfer torque is calculated from motor rated torque * deceleration ratio * transmission efficiency.



有刷直流减速电机 DC GEAR MOTOR

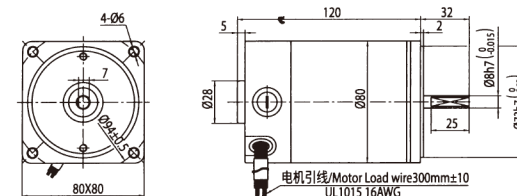
40W 80mm



●外形尺寸 (单位mm) Dimension (unit mm)

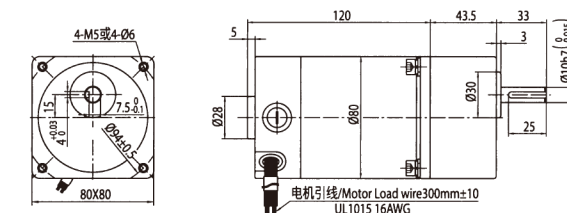
●圆轴电机

重量 Weighr: 1.8kg



●组合: 引线型电机 + 标准减速箱 (减速比 1:3~200)

重量 Weighr: 2.6kg

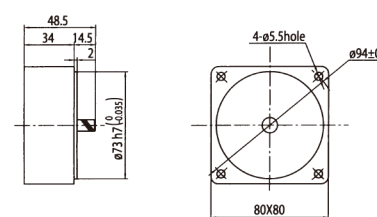


●中间齿轮箱 Decimal Gearhead

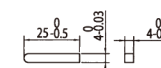
可安装在齿轮轴型上 Can be connected to GN pinion shaft type

电动机外形与齿轮轴型相同 4GN10XK

重量 Weight: 0.41kg

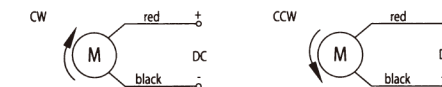


●键 (减速器附件)



其中速比 3~18 可以做成短型减速箱, 高度为 32mm。Gear ratio 3~18, short case is possible, height of 32mm.

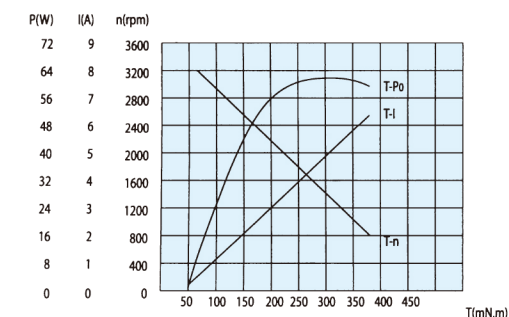
●接线图 Wiring Diagram



●运转方向指从电机轴看来的方向。CW 表示顺时针方向, CCW 表示逆时针方向。

● The direction of motor rotation is as viewed from the shaft end of motoc CW represents the clockwise direction, while CCW represents the counterclockwise direction

●电机特性曲线 Characteristic Curve of Motor



●电机型号/性能 List of motor characteristics

电机型号 Model	单压 Voltage V	功率 Power W	空载参数 No-load Parameter		负载参数 Load Parameters			电刷寿命 brush life H	电机重量 Motor Weight kg
			转速 Speed r/min	电流 Current A	转速 speed r/min	力矩 torque mN.m	电流 current A		
H4D40-12 □	12	40	3350	1.6	3000	127	4.8	2000	1.8
H4D40-24 □	24	40	3300	0.8	3000	127	2.4	2000	1.8
H4D40-90 □	90	40	3250	0.2	3000	127	0.65	2000	1.8
H4D40-12 □	12	40	2050	0.8	1800	212	4.8	2000	1.8
H4D40-24 □	24	40	2100	0.5	1800	212	2.4	2000	1.8
H4D40-90 □	90	40	2050	0.2	1800	212	0.65	2000	1.8

●电机电压、功率及转速可在配件尺寸等条件下根据客户要求定制。

●外置电刷电机, 用户可自行在外部更换电刷; 内置电刷电机更换电刷时需将电机拆装后方可更换; F4D 此型号是外置电刷电机。

● Motor voltage, power and speed will be customized according to his request under allowed circumstance of adoptable dimension.

● For external brush motor, you can replace the brush directly. For internal ones, we need to disassembly the motor first. F4D this model is external brush motor.

●减速箱减速比 / 性能对照表 Gear reduction ratio/performance comparison

型号 Model	减速比 Gear Ratio	3	3.6	5	6	7.5	9	10	12.5	15	18	20	25	30	36	40	50	60	75	90	100	120	150	180	200
H4D40-24 □ -30S	转速 Speed r/min	999	833	600	500	400	333	300	240	200	166	150	120	100	83	75	60	50	40	33	30	25	20	16.5	15
	转矩 Torgne N.m	0.31	0.37	0.51	0.62	0.77	0.93	1.03	1.29	1.54	1.85	2.06	2.32	2.78	3.33	3.71	4.63	5.00	6.25	7.51	8	8	8	8	8
H4D40-24 □ -18S	转速 Speed r/min	600	500	360	300	240	200	180	144	120	100	90	72	60	50	45	36	30	24	20	18	15	12	10	9
	转矩 Torgne N.m	0.52	0.62	0.86	1.03	1.29	1.55	1.72	2.15	2.58	3.09	3.43	3.86	4.64	5.56	6.18	7.73	8	8	8	8	8	8	8	8

●表中转速是以电机的平均转速为基数除以减速比而算出的数值。实际转速将随负载大小而变化, 变化范围 2-20%。

●表中 □ 色框表示输出轴的旋转方向与电机旋转方向相反。

●表中转矩是以电机额定转矩 × 减速比 × 传动效率计算而得。

● In the table, the speed is calculated from the base of the motor's average speed divided by the deceleration ratio. The actual speed will vary with the load, ranging from 2% to 20%.

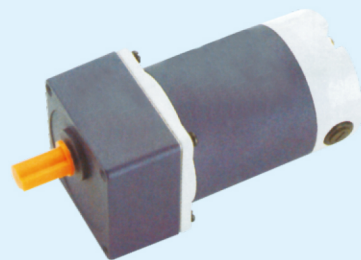
● The □ box in the table indicates that the rotation direction of the output axis is opposite to that of the motor.

● Table transfer torque is calculated from motor rated torque * deceleration ratio * transmission efficiency.



有刷直流减速电机 DC GEAR MOTOR

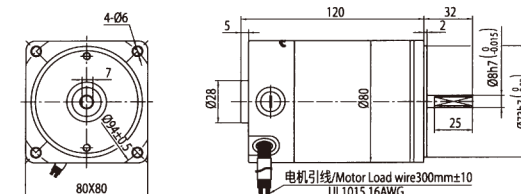
60W 80mm



●外形尺寸 (单位mm) Dimension (unit mm)

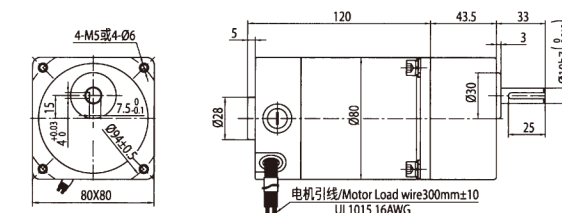
●圆轴电机

重量 Weighr: 1.8kg



●组合: 引线型电机 + 标准减速箱 (减速比 1:3~200)

重量 Weighr: 2.6kg

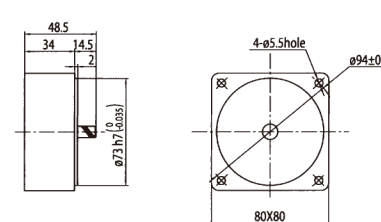


●中间齿轮箱 Decimal Gearhead

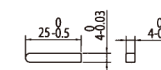
可安装在齿轮轴型上 Can be connected to GN pinion shaft type

电动机外形与齿轮轴型相同 4GN10XK

重量 Weight: 0.41kg



●键 (减速器附件)



●电机型号/性能 List of motor characteristics

电机型号 Model	单压 Voltage V	功率 Power W	空载参数 No-load Parameter		负载参数 Load Parameters			电刷寿命 brush life H	电机重量 Motor Weight kg
			转速 Speed r/min	电流 Current A	转速 speed r/min	力矩 torque mN.m	电流 current A		
H4D60-12 □	12	60	3350	2	3000	191	7.5	2000	1.8
H4D60-24 □	24	60	3300	1	3000	191	3.6	2000	1.8
H4D60-90 □	90	60	3250	0.3	3000	191	1.0	2000	1.8
H4D60-12 □	12	60	2100	1	1800	318	7.5	2000	1.8
H4D60-24 □	24	60	2150	0.6	1800	318	3.6	2000	1.8
H4D60-90 □	90	60	2100	0.25	1800	318	1.0	2000	1.8

●电机电压、功率及转速可在配件尺寸等条件下根据客户要求定制。

●外置电刷电机，用户可自行在外部更换电刷；内置电刷电机更换电刷时需将电机拆装后方可更换；F4D 此型号是外置电刷电机。

● Motor voltage, power and speed will be customized according to his request under allowed circumstance of adoptable dimension.

● For external brush motor, you can replace the brush directly. For internal ones, we need to disassembly the motor fist. F4D this model is external brush motor.

●减速箱减速比 / 性能对照表 Gear reduction ratio/performance comparison

型号 Model	减速比 Gear Ratio	3	3.6	5	6	7.5	9	10	12.5	15	18	20	25	30	36	40	50	60	75	90	100	120	150	180	200
H4D60-24 □ -30S	转速 Speed r/min	999	833	600	500	400	333	300	240	200	166	150	120	100	83	75	60	50	40	33	30	25	20	16.5	15
	转矩 Torgne N.m	0.46	0.56	0.77	0.93	1.16	1.39	1.54	1.93	2.32	2.78	3.10	3.48	4.18	5.01	5.56	6.96	7.51	8	8	8	8	8	8	8
H4D60-24 □ -18S	转速 Speed r/min	600	500	360	300	240	200	180	144	120	100	90	72	60	50	45	36	30	24	20	18	15	12	10	9
	转矩 Torgne N.m	0.77	0.93	1.29	1.55	1.93	2.32	2.58	3.22	3.86	4.64	5.15	5.80	6.95	8	8	8	8	8	8	8	8	8	8	8

●表中转速是以电机的平均转速为基数除以减速比而算出的数值。实际转速将随负载大小而变化，变化范围 2-20%。

●表中 色框表示输出轴的旋转方向与电机旋转方向相反。

●表中转矩是以电机额定转矩 × 减速比 × 传动效率计算而得。

● In the table, the speed is calculated from the base of the motor's average speed divided by the deceleration ratio. The actual speed will vary with the load, ranging from 2% to 20%.

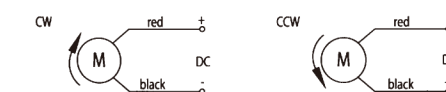
● The box in the table indicates that the rotation direction of the output axis is opposite to that of the motor.

● Table transfer torque is calculated from motor rated torque * deceleration ratio * transmission efficiency.

法拉棣 FARADY

●其中速比 3~18 可以做成短型减速箱，高度为 32mm。Gear ratio 3~18, short case is possible, height of 32mm.

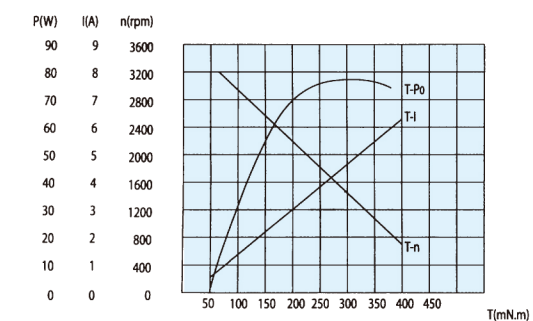
●接线图 Wiring Diagram



●运转方向指从电机轴看来的方向。CW 表示顺时针方向，CCW 表示逆时针方向。

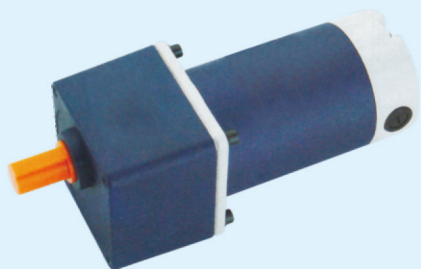
● The direction of motor rotation is as viewed from the shaft end of motoc CW represents the clockwise direction, while CCW represents the counterclockwise direction

●电机特性曲线 Characteristic Curve of Motor



有刷直流减速电机 DC GEAR MOTOR

90W 90mm



电机型号/性能 List of motor characteristics

电机型号 Model	单压 Voltage V	功率 Power W	空载参数 No-load Parameter		负载参数 Load Parameters			电刷寿命 brush life H	电机重量 Motor Weight kg
			转速 Speed r/min	电流 Current A	转速 speed r/min	力矩 torque mN.m	电流 current A		
H5D90-12 □	12	90	3400	1.7	3000	286	10.2	2000	2.2
H5D90-24 □	24	90	3350	0.9	3000	286	5.2	2000	2.2
H5D90-90 □	90	90	3300	0.35	3000	286	1.4	2000	2.2
H5D90-12 □	12	90	2200	1.1	1800	477	10.2	2000	2.2
H5D90-24 □	24	90	2150	0.7	1800	477	5.2	2000	2.2
H5D90-90 □	90	90	2100	0.3	1800	477	1.4	2000	2.2

- 电机电压、功率及转速可在配件尺寸等条件下根据客户要求定制。
- 外置电刷电机，用户可自行在外部更换电刷；内置电刷电机更换电刷时需将电机拆装后方可更换；F5D 此型号是外置电刷电机。
- Motor voltage, power and speed will be customized according to his requestment under allowed circumstance of adoptable dimension.
- For external brush motor, you can replace the brush directly. For internal ones, we need to disassembly the motor fist. F5D this model is external brush motor.

减速箱减速比 / 性能对照表 Gear reduction ratio/performance comparison

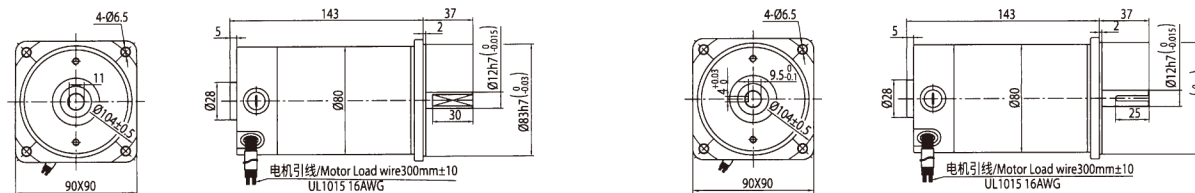
型号 Model	减速比 Gear Ratio	3	3.6	5	6	7.5	9	10	12.5	15	18	20	25	30	36	40	50	60	75	90	100	120	150	180	200
H5D90-24 □ -30S	转速 Speed r/min	999	833	600	500	400	333	300	240	200	166	150	120	100	83	75	60	50	40	33	30	25	20	16.5	15
	转矩 Torgne N.m	0.69	0.83	1.16	1.39	1.74	2.09	2.09	2.61	3.13	3.75	3.75	4.69	5.63	6.76	7.51	9.38	11.25	14.07	15.20	16.89	20	20	20	20
H5D90-24 □ -18S	转速 Speed r/min	600	500	360	300	240	200	180	144	120	100	90	72	60	50	45	36	30	24	20	18	15	12	10	9
	转矩 Torgne N.m	1.16	1.39	1.93	2.32	2.90	3.48	3.86	4.35	5.22	6.26	6.95	7.82	9.39	11.27	12.52	15.65	18.78	20	20	20	20	20	20	20

- 表中转速是以电机的平均转速为基数除以减速比而算出的数值。实际转速将随负载大小而变化，变化范围 2-20%。
- 表中 □ 色框表示输出轴的旋转方向与电机旋转方向相反。
- 表中转矩是以电机额定转矩 × 减速比 × 传动效率计算而得。
- In the table, the speed is calculated from the base of the motor's average speed divided by the deceleration ratio. The actual speed will vary with the load, ranging from 2% to 20%.
- The □ box in the table indicates that the rotation direction of the output axis is opposite to that of the motor.
- Table transfer torque is calculated from motor rated torque * deceleration ratio * transmission efficiency.

外形尺寸 (单位mm) Dimension (unit mm)

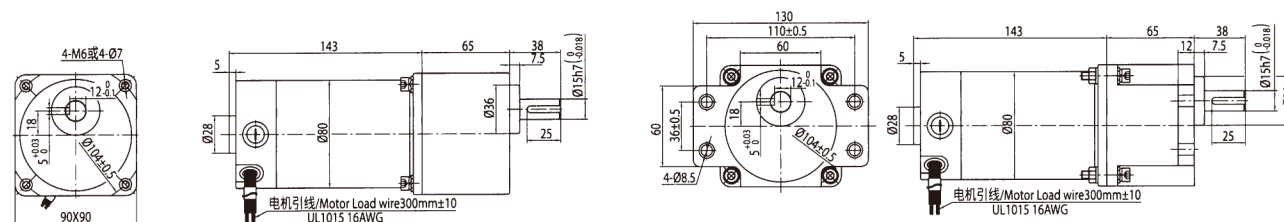
圆轴电机

重量 Weighr: 2.2kg



组合: 引线型电机 + 标准减速箱 (减速比 1:3~200)

重量 Weighr: 3.7kg

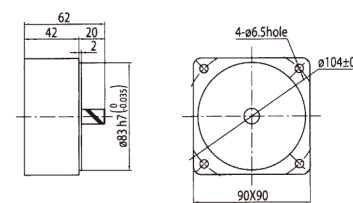


中间齿轮箱 Decimal Gearhead

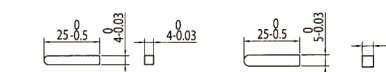
可安装在 GU 齿轮轴型上 Can be connected to GU pinion shaft type

电动机外形与齿轮轴型相同 5GU10XK

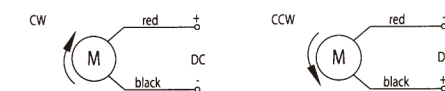
重量 Weight: 0.7kg



键 (减速器附件)



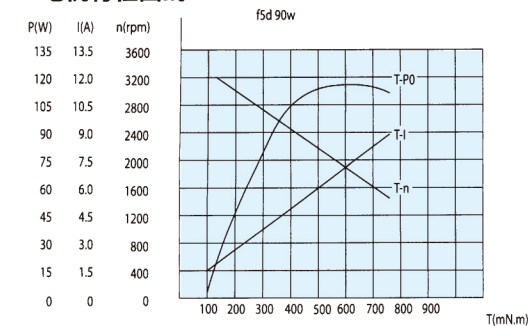
接线图 Wiring Diagram



运转方向指从电机轴看来的方向。CW 表示顺时针方向，CCW 表示逆时针方向。

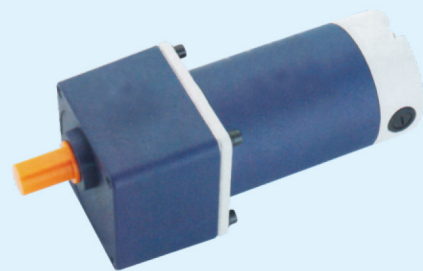
The direction of motor rotation is as viewed from the shaft end of motor CW represents the clockwise direction, while CCW represents the counterclockwise direction

电机特性曲线 Characteristic Curve of Motor



有刷直流减速电机 DC GEAR MOTOR

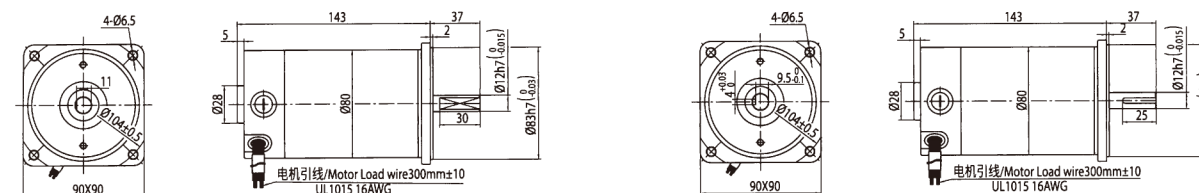
120W 90mm



●外形尺寸 (单位mm) Dimension (unit mm)

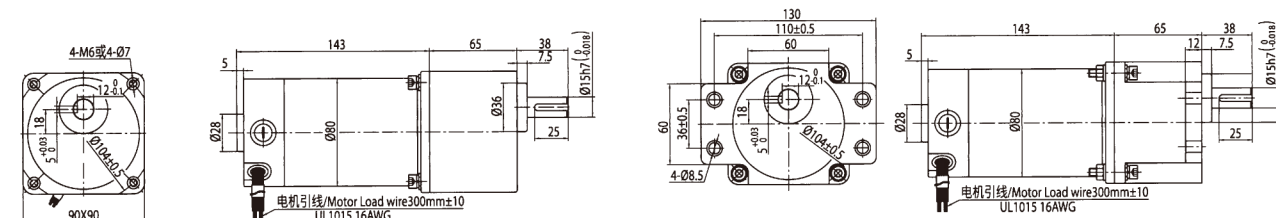
●圆轴电机

重量 Weighr: 2.2kg



●组合: 引线型电机 + 标准减速箱 (减速比 1:3~200)

重量 Weighr: 3.7kg

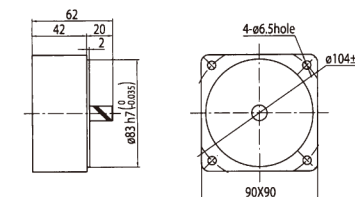


●中间齿轮箱 Decimal Gearhead

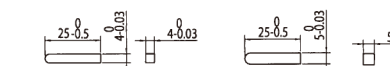
可安装在 GU 齿轮轴型上 Can be connected to GU pinion shaft type

电动机外形与齿轮轴型相同 5GU10XK

重量 Weight: 0.7kg



●键 (减速器附件)



●电机型号/性能 List of motor characteristics

电机型号 Model	单压 Voltage V	功率 Power W	空载参数 No-load Parameter		负载参数 Load Parameters			电刷寿命 brush life H	电机重量 Motor Weight kg
			转速 Speed r/min	电流 Current A	转速 speed r/min	力矩 torque mN.m	电流 current A		
H5D120-12 □	12	120	3500	2.1	3000	382	13.9	2000	2.2
H5D120-24 □	24	120	3500	1.2	3000	382	7.1	2000	2.2
H5D120-90 □	90	120	3400	0.4	3000	382	1.9	2000	2.2
H5D120-12 □	12	120	2300	1.3	1800	636	13.9	2000	2.2
H5D120-24 □	24	120	2250	0.7	1800	636	7.1	2000	2.2
H5D120-90 □	90	120	2100	0.3	1800	636	1.9	2000	2.2

●电机电压、功率及转速可在配件尺寸等条件下根据客户要求定制。

●外置电刷电机，用户可自行在外部更换电刷；内置电刷电机更换电刷时需将电机拆装后方可更换；F5D 此型号是外置电刷电机。

● Motor voltage, power and speed will be customized according to his request under allowed circumstance of adoptable dimension.

● For external brush motor, you can replace the brush directly. For internal ones, we need to disassembly the motor first. F5D this model is external brush motor.

●减速箱减速比 / 性能对照表 Gear reduction ratio/performance comparison

型号 Model	减速比 Gear Ratio	3	3.6	5	6	7.5	9	10	12.5	15	18	20	25	30	36	40	50	60	75	90	100	120	150	180	200
H5D120-24□ -30S	转速 Speed r/min	999	833	600	500	400	333	300	240	200	166	150	120	100	83	75	60	50	40	33	30	25	20	16.5	15
	转矩 Torgne N.m	0.93	1.11	1.55	1.86	2.32	2.79	2.79	3.48	4.18	5.01	5.01	6.27	7.52	9.0	10.0	12.53	15.0	18.8	20	20	20	20	20	20
H5D120-24□ -18S	转速 Speed r/min	600	500	360	300	240	200	180	144	120	100	90	72	60	50	45	36	30	24	20	18	15	12	10	9
	转矩 Torgne N.m	1.55	1.85	2.58	3.09	3.86	4.64	5.15	5.80	6.95	8.35	9.27	11.59	13.91	16.69	18.55	20	20	20	20	20	20	20	20	20

●表中转速是以电机的平均转速为基数除以减速比而算出的数值。实际转速将随负载大小而变化，变化范围 2-20%。

●表中 □ 色框表示输出轴的旋转方向与电机旋转方向相反。

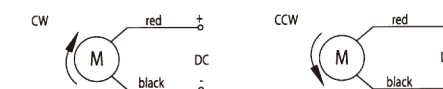
●表中转矩是以电机额定转矩 × 减速比 × 传动效率计算而得。

● In the table, the speed is calculated from the base of the motor's average speed divided by the deceleration ratio. The actual speed will vary with the load, ranging from 2% to 20%.

● The □ box in the table indicates that the rotation direction of the output axis is opposite to that of the motor.

● Table transfer torque is calculated from motor rated torque * deceleration ratio * transmission efficiency.

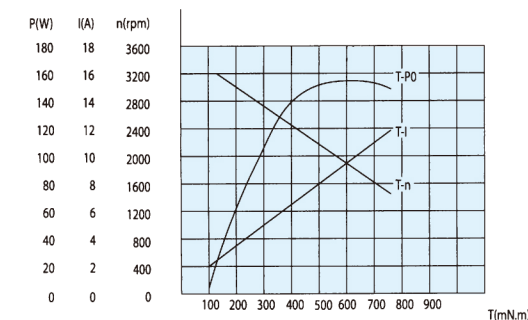
●接线图 Wiring Diagram



●运转方向指从电机轴看来的方向。CW 表示顺时针方向，CCW 表示逆时针方向。

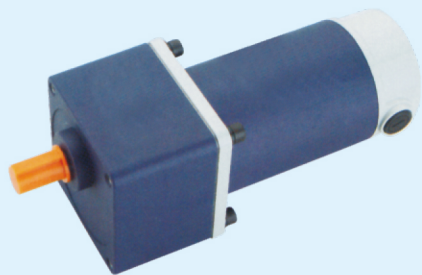
● The direction of motor rotation is as viewed from the shaft end of motor CW represents the clockwise direction, while CCW represents the counter-clockwise direction

●电机特性曲线 Characteristic Curve of Motor



有刷直流减速电机 DC GEAR MOTOR

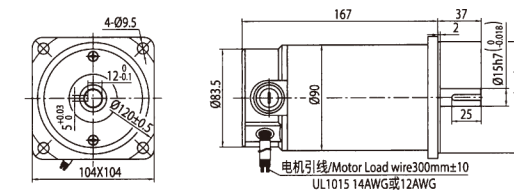
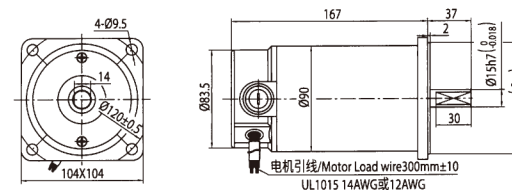
250W 104mm



●外形尺寸 (单位mm) Dimension (unit mm)

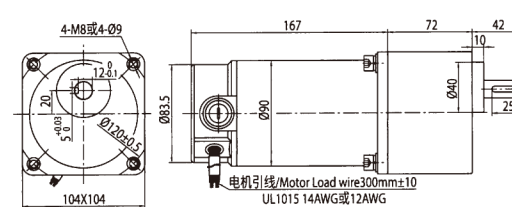
●圆轴电机

重量 Weighr: 3.2kg

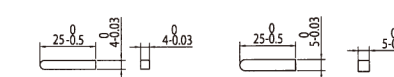


●组合: 引线型电机 + 标准减速箱 (减速比 1:3~200)

重量 Weighr: 5.3kg



●键 (减速器附件)



●电机型号/性能 List of motor characteristics

电机型号 Model	单压 Voltage V	功率 Power W	空载参数 No-load Parameter		负载参数 Load Parameters			电刷寿命 brush life H	电机重量 Motor Weight kg
			转速 Speed r/min	电流 Current A	转速 speed r/min	力矩 torque mN.m	电流 current A		
H6D250-12 □	12	250	3550	3.5	3000	795	27.4	2000	3.2
H6D250-24 □	24	250	3500	1.5	3000	795	13.7	2000	3.2
H6D250-48 □	48	250	3350	0.9	3000	795	6.7	2000	3.2
H6D250-12 □	12	250	2300	2.5	1800	1326	27.6	2000	3.2
H6D250-24 □	24	250	2250	1.2	1800	1326	13.9	2000	3.2
H6D250-48 □	48	250	2150	0.5	1800	1326	6.8	2000	3.2

●电机电压、功率及转速可在配件尺寸等条件下根据客户要求定制。

●外置电刷电机，用户可自行在外部更换电刷；内置电刷电机更换电刷时需将电机拆装后方可更换；F6D 此型号是外置电刷电机。

● Motor voltage, power and speed will be customized according to his request under allowed circumstance of adoptable dimension.

● For external brush motor, you can replace the brush directly. For internal ones, we need to disassembly the motor fist. F6D this model is external brush motor.

●减速箱减速比 / 性能对照表 Gear reduction ratio/performance comparison

型号 Model	减速比 Gear Ratio	3	3.6	5	6	7.5	9	10	12.5	15	18	20	25	30	36	40	50	60	75	90	100	120	150	180	200
H6D250-24 □-30S	转速 Speed r/min	999	833	600	500	400	333	300	240	200	166	150	120	100	83	75	60	50	40	33	30	25	20	16.5	15
	转矩 Torgne N.m	1.93	2.32	3.22	3.86	4.83	5.80	5.80	7.24	8.69	10.43	10.43	13.04	15.65	18.8	20.9	26.1	31.3	39.1	40	40	40	40	40	40
H6D250-24 □-18S	转速 Speed r/min	600	500	360	300	240	200	180	144	120	100	90	72	60	50	45	36	30	24	20	18	15	12	10	9
	转矩 Torgne N.m	3.22	3.87	5.37	6.44	8.06	9.67	10.74	12.08	14.50	17.40	19.33	21.75	26.10	31.32	34.80	40	40	40	40	40	40	40	40	40

●表中转速是以电机的平均转速为基数除以减速比而算出的数值。实际转速将随负载大小而变化，变化范围 2-20%。

●表中 □ 色框表示输出轴的旋转方向与电机旋转方向相反。

●表中转矩是以电机额定转矩 × 减速比 × 传动效率计算而得。

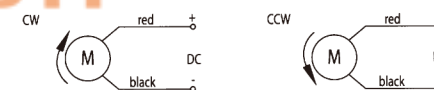
● In the table, the speed is calculated from the base of the motor's average speed divided by the deceleration ratio. The actual speed will vary with the load, ranging from 2% to 20%.

● The □ box in the table indicates that the rotation direction of the output axis is opposite to that of the motor.

● Table transfer torque is calculated from motor rated torque * deceleration ratio * transmission efficiency.

法拉捷 FARADYI

●接线图 Wiring Diagram



●运转方向指从电机轴看来的方向。CW 表示顺时针方向，CCW 表示逆时针方向。

● The direction of motor rotation is as viewed from the shaft end of motor CW represents the clockwise direction, while CCW represents the counterclockwise direction.

●电机特性曲线 Characteristic Curve of Motor

